



Order: (888)-282-5810 (Phone)
(818)-707-0392 (Fax)
order@abiocode.com
Web: www.Abiocode.com

NPR1 (N) Antibody, Rabbit Polyclonal

Cat#: R3131-1

Quantity: 100 ul

Predicted | Observed MW: 119 kDa

Lot#: Refer to vial

Application: WB, IP

Uniprot ID: P16066

Background:

Atrial natriuretic peptide receptor 1 (NPR1) is a single pass type I membrane protein. NPR1 is a receptor for the atrial natriuretic peptide NPPA/ANP and the brain natriuretic peptide NPPB/BNP, which are potent vasoactive hormones playing a key role in cardiovascular homeostasis. NPR1 has guanylate cyclase activity upon binding of the ligand.

Other Names:

Atrial natriuretic peptide receptor 1, Atrial natriuretic peptide receptor type A, ANP-A, ANPR-A, NPR-A, Guanylate cyclase A, GC-A

Source and Purity:

Rabbit polyclonal antibodies were produced by immunizing animals with a GST-fusion protein containing the N-terminal region of human NPR1. Antibodies were purified by affinity purification using immunogen.

Storage Buffer and Condition:

Supplied in 1 x PBS (pH 7.4), 100 ug/ml BSA, 40% Glycerol, 0.01% NaN₃. Store at -20 °C. Stable for 6 months from date of receipt.

Species Specificity:

Human

Tested Applications:

WB: 1:1,000-1:3,000 (detect endogenous protein*)

IP: 1:100-1:200

*: The apparent protein size on WB may be different from the calculated M.W. due to modifications.

Product Data:

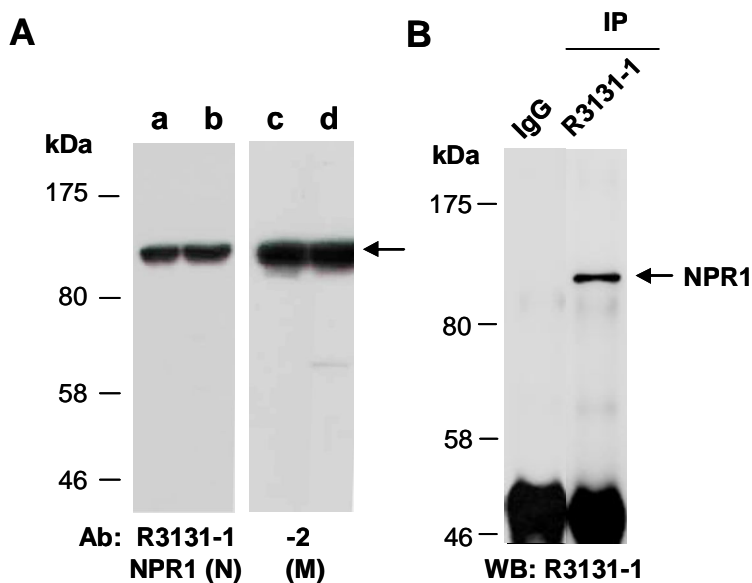


Fig 1. A) Western blot of total cell extracts from a,c. human HeLa; b,d. human Jurkat; using 2 independent Abs against 2 distinct regions of human NPR1 at RT for 2 h. **B)** Total extracts from human HeLa were immunoprecipitated (IP) with IgG or anti-NPR1 (N) (R3131-1); followed by WB with the same Ab.