



Order: (888)-282-5810 (Phone)
(818)-707-0392 (Fax)
order@abiocode.com
Web: www.Abiocode.com

SRGAP2 (N1) Antibody, Rabbit Polyclonal

Cat#: R3309-1

Quantity: 100 ul

Predicted | Observed MW: 121 | 140 kDa

Lot#: Refer to vial

Application: WB, IP

Uniprot ID: O75044

Background:

SLIT-ROBO Rho GTPase-activating protein 2 (SRGAP2) is a member of the SLIT-ROBO Rho GTPase activating protein family. SRGAP2 is a RAC1 GTPase activating protein (GAP) that binds and deforms membranes, and regulates actin dynamics to regulate cell migration and differentiation. SRGAP2 plays an important role in different aspects of neuronal morphogenesis and migration mainly during development of the cerebral cortex. This includes the biogenesis of neurites, where it is required for both axons and dendrites outgrowth, and the maturation of the dendritic spines. SRGAP2 also stimulates the branching of the leading process and negatively regulates neuron radial migration in the cerebral cortex. Its interaction and inhibition by SRGAP2C reduces the rate of spine maturation, alters dendritic spine morphology and density and indirectly increases neuronal migration. It may have implications for cognition, learning and memory. In non-neuronal cells, it may play a role in cell migration by regulating the formation of lamellipodia and filopodia.

Other Names:

SLIT-ROBO Rho GTPase-activating protein 2, srGAP2, Formin-binding protein 2, Rho GTPase-activating protein 34, ARHGAP34, FNBP2, KIAA0456, SRGAP2A

Source and Purity:

Rabbit polyclonal antibodies were produced by immunizing animals with a GST-fusion protein containing the N-terminal region of human SRGAP2. Antibodies were purified by affinity purification using immunogen.

Storage Buffer and Condition:

Supplied in 1 x PBS (pH 7.4), 100 ug/ml BSA, 40% Glycerol, 0.01% NaN₃. Store at -20 °C. Stable for 6 months from date of receipt.

Tested Applications:

WB: 1:1,000-1:3,000 (detect endogenous protein*)

IP: 1:100-1:200

*: The apparent protein size on WB may be different from the calculated M.W. due to modifications.

Species Specificity:

Human, Mouse

Product Data:

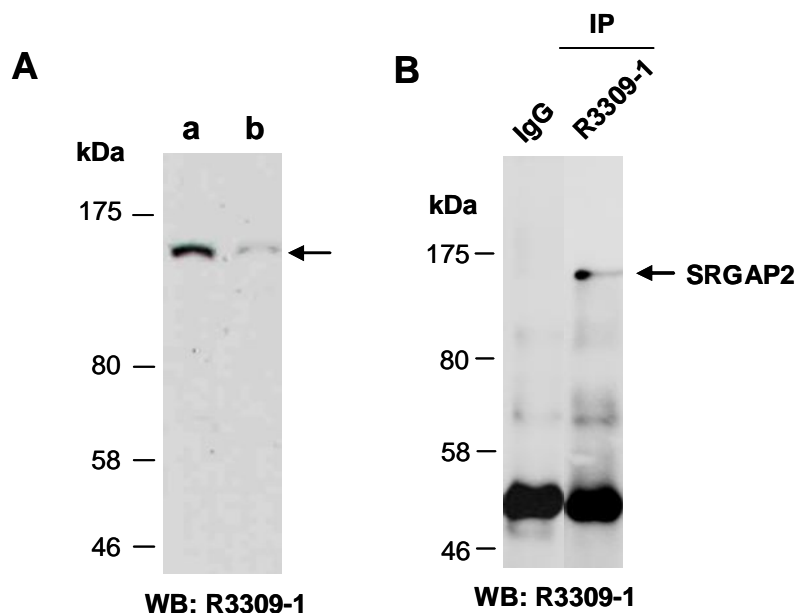


Fig 1. A) Western blot of total cell extracts from a. human HeLa, b. human Jurkat; using anti-SRGAP2 (N1) (R3309-1) at RT for 2 h. **B)** Total extracts from human HeLa were immunoprecipitated with IgG or anti-SRGAP2 (N1) (R3309-1); followed by WB with the same Ab and Rabbit IgG light chain-specific 2nd antibody.