



Order: (888)-282-5810 (Phone)  
(818)-707-0392 (Fax)  
[order@abiocode.com](mailto:order@abiocode.com)  
Web: [www.Abiocode.com](http://www.Abiocode.com)

---

## CTCF (N) Antibody, Rabbit Polyclonal

**Cat#:** R3171-1

**Quantity:** 100 ul

**Predicted | Observed M.W.:** 83 kDa

**Lot#:** Refer to vial

**Application:** WB

**Uniprot ID:** P49711

### **Background:**

Transcriptional repressor CTCF (CTCF) belongs to the CTCF zinc-finger protein family and is a chromatin binding factor that binds to DNA sequence specific sites. CTCF is involved in transcriptional regulation by binding to chromatin insulators and preventing interaction between promoter and nearby enhancers and silencers. CTCF acts as transcriptional repressor binding to promoters of vertebrate MYC gene and BAG1 gene. Furthermore, CTCF plays an essential role in oocyte and preimplantation embryo development by activating or repressing transcription. CTCF also seems to act as tumor suppressor.

### **Other Names:**

Transcriptional repressor CTCF, 11-zinc finger protein, CCCTC-binding factor, CTCFL paralog

### **Source and Purity:**

Rabbit polyclonal antibodies were produced by immunizing animals with a GST-fusion protein containing the N-terminal region of human CTCF. Antibodies were purified by affinity purification using immunogen.

### **Storage Buffer and Condition:**

Supplied in 1 x PBS (pH 7.4), 100 ug/ml BSA, 40% Glycerol, 0.01% NaN<sub>3</sub>. Store at -20 °C. Stable for 6 months from date of receipt.

### **Species Specificity:**

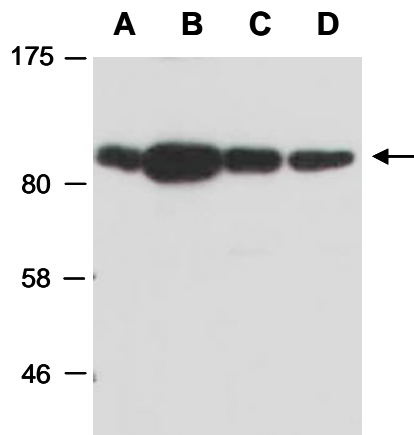
Human, Mouse

### **Tested Applications:**

WB: 1:500-1:3,000 (detect endogenous protein\*)

\*: The apparent protein size on WB may be different from the calculated M.W. due to modifications.

**Product Data:**



**Fig 1.** Western blot of total cell extracts from A) mouse brain, B) mouse thymus, C) human HeLa, D) human Jurkat; using anti-CTCF (N) (R3171-1) at RT for 2 h.