



Order: (888)-282-5810 (Phone)
(818)-707-0392 (Fax)
order@abiocode.com
Web: www.Abiocode.com

EED (C2) Antibody, Rabbit Polyclonal

Cat#: R0322-4

Quantity: 100 ul

Predicted | Observed M.W.: 50 | 58 kDa

Lot#: Refer to vial

Application: WB

Uniprot ID: O75530

Background:

Polycomb protein EED is a member of the Polycomb-group (PcG) family. PcG family members form multimeric protein complexes involved in maintaining the transcriptional repressive state of genes over successive cell generations. EED interacts with enhancer of zeste 2, the cytoplasmic tail of integrin beta7, immunodeficiency virus type 1 (HIV-1) MA protein, and histone deacetylase proteins. EED mediates gene repression through histone deacetylation, and may act as a specific regulator of integrin function.

Other Names:

HEED, WAIT-1, WD protein associating with integrin cytoplasmic tails 1, Polycomb protein EED

Source and Purity:

Rabbit polyclonal antibodies were produced by immunizing animals with a GST-fusion protein containing C-terminal region of human EED. Antibodies were purified by affinity purification using immunogen.

Storage Buffer and Condition:

Supplied in 1 x PBS (pH 7.4), 100 ug/ml BSA, 40% Glycerol, 0.01% NaN₃. Store at -20 °C. Stable for 6 months from date of receipt.

Species Specificity:

Human

Tested Applications:

WB: 1:1,000-1:3,000 (detect endogenous protein*)

*: The apparent protein size on WB may be different from the calculated M.W. due to modifications.

Product Data:

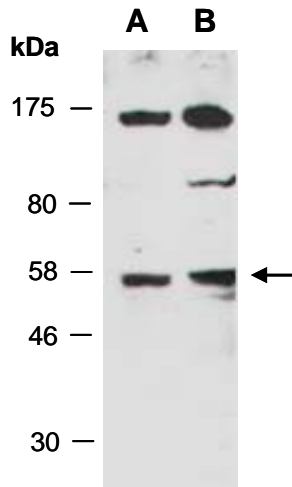


Fig 1. Western blot of total cell extracts from A) human HeLa; B) human Jurkat; using anti-EED (C2) (R0322-4) at RT for 2 h.