



Order: (888)-282-5810 (Phone)
(818)-707-0392 (Fax)
order@abiocode.com
Web: www.Abiocode.com

COL6A1 (N) Antibody, Rabbit Polyclonal

Cat#: R0893-1

Quantity: 100 ul

Predicted | Observed MW: 109 kDa

Lot#: Refer to vial

Application: WB

Uniprot ID: P12109

Background:

Collagen alpha-1(VI) chain (COL6A1) belongs to the type VI collagen family. COL6A1 acts as a cell-binding protein. Defects in COL6A1 are a cause of Bethlem myopathy (BM) and of Ullrich congenital muscular dystrophy (UCMD).

Other Names:

Collagen alpha-1(VI) chain

Source and Purity:

Rabbit polyclonal antibodies were produced by immunizing animals with a GST-fusion protein containing the N-terminal region of human COL6A1. Antibodies were purified by affinity purification using immunogen.

Storage Buffer and Condition:

Supplied in 1 x PBS (pH 7.4), 100 ug/ml BSA, 40% Glycerol, 0.01% NaN₃. Store at -20 °C. Stable for 6 months from date of receipt.

Species Specificity:

Human, Mouse

Tested Applications:

WB: 1:1,000-1:3,000 (detect endogenous protein*)

*: The apparent protein size on WB may be different from the calculated M.W. due to modifications.

Product Data:

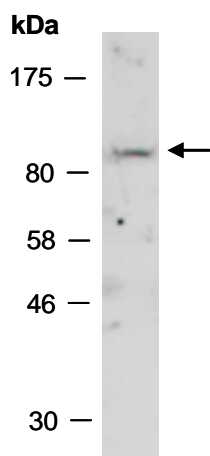


Fig 1. Western blot of total cell extracts from mouse thymus; using anti- PHF16 (N1) (R2097-1) at RT for 2 h.