



Order: (888)-282-5810 (Phone)  
(818)-707-0392 (Fax)  
[order@abiocode.com](mailto:order@abiocode.com)  
Web: [www.Abiocode.com](http://www.Abiocode.com)

---

## **RGL1 (C) Antibody, Rabbit Polyclonal**

**Cat#: R1856-2**

**Quantity: 100 ul**

**Predicted | Observed M.W.: 87 | 110 kDa**

**Lot#: Refer to vial**

**Application: WB**

**Uniprot ID: Q9NZL6**

### **Background:**

Ral guanine nucleotide dissociation stimulator-like 1 (RGL1) is a probable guanine nucleotide exchange factor. RGL is a putative effector of Ras and contains a Ras-interacting domain (RID). RID of RGL1 specifically binds to Ras in mammalian cells and it blocks the signal from Ras to Raf-1 and reverses v-Ras-induced malignancy.

### **Other Names:**

Ral guanine nucleotide dissociation stimulator-like 1, RaIGDS-like 1, KIAA0959, RGL

### **Source and Purity:**

Rabbit polyclonal antibodies were produced by immunizing animals with a GST-fusion protein containing the C-terminal region of human RGL1. Antibodies were purified by affinity purification using immunogen.

### **Storage Buffer and Condition:**

Supplied in 1 x PBS (pH 7.4), 100 ug/ml BSA, 40% Glycerol, 0.01% NaN<sub>3</sub>. Store at -20 °C. Stable for 6 months from date of receipt.

### **Species Specificity:**

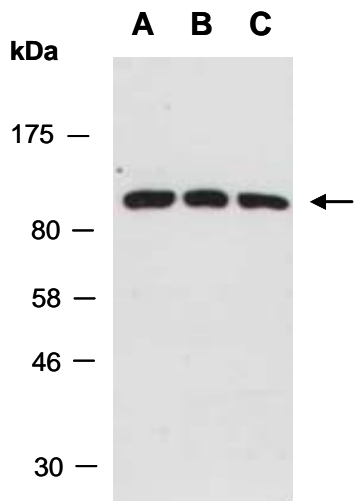
Human, Mouse

### **Tested Applications:**

WB: 1:1,000-1:3,000 (detect endogenous protein\*)

\*: The apparent protein size on WB may be different from the calculated M.W. due to modifications.

**Product Data:**



**Fig 1.** Western blot of total cell extracts from A) mouse thymus; B) human HeLa; C) human Jurkat; using anti-RGL1 (C) (R1856-2) at RT for 2 h.