



Order: (888)-282-5810 (Phone)
(818)-707-0392 (Fax)
order@abiocode.com
Web: www.Abiocode.com

MAP2K4 (C) Antibody, Rabbit Polyclonal

Cat#: R1907-2

Quantity: 100 ul

Predicted | Observed M.W.: 44 kDa

Lot#: Refer to vial

Application: WB

Uniprot ID: P45985

Background:

MAP kinase kinase 4 (MAP2K4) is a member of the mitogen-activated protein kinase (MAPK) family. Members of this family act as an integration point for multiple biochemical signals and are involved in a wide variety of cellular processes such as proliferation, differentiation, transcription regulation, and development. They form a three-tiered signaling module composed of MAPKKKs, MAPKKs, and MAPKs. MAP2K4 is phosphorylated at serine and threonine residues by MAPKKKs and subsequently phosphorylates downstream MAPK targets at threonine and tyrosine residues. A similar protein in mouse has been reported to play a role in liver organogenesis.

Other Names:

JNKK1, MEK4, MKK4, PRKMK4, SEK1, SERK1, SKK1, JNKK, c-Jun N-terminal kinase kinase 1, SAPKK1, SAPKK-1, SAPK kinase 1, Stress-activated protein kinase kinase 1, SEK1, SAPK/ERK kinase 1, MEK 4, MAPK/ERK kinase 4, JNK-activating kinase 1, MAPKK 4, MAP kinase kinase 4, Dual specificity mitogen-activated protein kinase kinase 4

Source and Purity:

Rabbit polyclonal antibodies were produced by immunizing animals with a GST-fusion protein containing the C-terminal region of human MAP2K4. Antibodies were purified by affinity purification using immunogen.

Storage Buffer and Condition:

Supplied in 1 x PBS (pH 7.4), 100 ug/ml BSA, 40% Glycerol, 0.01% NaN₃. Store at -20 °C. Stable for 6 months from date of receipt.

Species Specificity:

Human, Mouse

Tested Applications:

WB: 1:1,000-1:3,000 (detect endogenous protein*)

*: The apparent protein size on WB may be different from the calculated M.W. due to modifications.

Product Data:

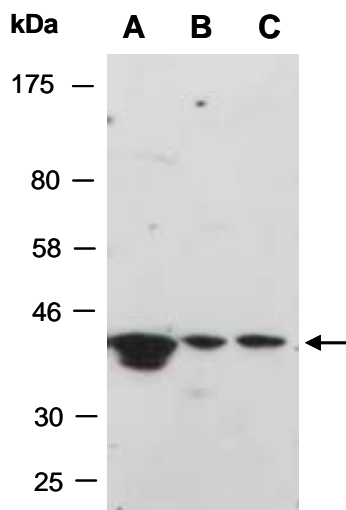


Fig 1. Western blot of total cell extracts from A) mouse thymus; B) human HeLa; C) human Jurkat; using anti-MAP2K4 (C) (R1907-2) at RT for 2 h.