



Order: (888)-282-5810 (Phone)  
(818)-707-0392 (Fax)  
[order@abiocode.com](mailto:order@abiocode.com)  
Web: [www.Abiocode.com](http://www.Abiocode.com)

---

## MEAF6 (C) Antibody, Rabbit Polyclonal

**Cat#: R1916-2**

**Quantity: 100 ul**

**Predicted | Observed M.W.: 22 kDa**

**Lot#: Refer to vial**

**Application: WB**

**Uniprot ID: Q9HAF1**

### **Background:**

MYST/Esa1-associated factor 6 (MEAF6) is a nuclear protein involved in transcriptional activation. MEAF6 is a component of the NuA4 histone acetyltransferase complex involved in transcriptional activation of select genes principally by acetylation of nucleosomal histone H4 and H2A. This modification may both alter nucleosome - DNA interactions and promote interaction of the modified histones with other proteins which positively regulate transcription. MEAF6 is also a component of the HBO1 complex, which has a histone H4-specific acetyltransferase activity, a reduced activity toward histone H3 and is responsible for the bulk of histone H4 acetylation *in vivo*.

### **Other Names:**

C1orf149, EAF6, Sarcoma antigen NY-SAR-91, hEAF6, Protein EAF6 homolog, Esa1-associated factor 6 homolog, Chromatin modification-related protein MEAF6, MYST/Esa1-associated factor 6, CENP-28, FLJ11730, NY-SAR-91

### **Source and Purity:**

Rabbit polyclonal antibodies were produced by immunizing animals with a GST-fusion protein containing the C-terminal region of human MEAF6. Antibodies were purified by affinity purification using immunogen.

### **Storage Buffer and Condition:**

Supplied in 1 x PBS (pH 7.4), 100 ug/ml BSA, 40% Glycerol, 0.01% NaN<sub>3</sub>. Store at -20 °C. Stable for 6 months from date of receipt.

### **Species Specificity:**

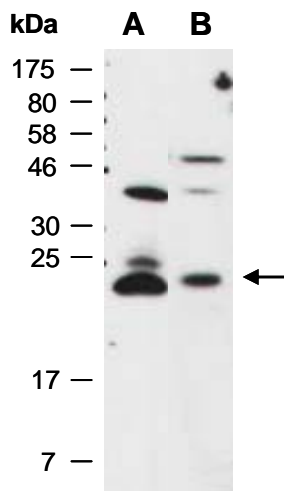
Human, Mouse

### **Tested Applications:**

WB: 1:1,000-1:3,000 (detect endogenous protein\*)

\*: The apparent protein size on WB may be different from the calculated M.W. due to modifications.

**Product Data:**



**Fig 1.** Western blot of total cell extracts from A) mouse thymus; B) human Jurkat; using anti-MEAF6 (C) (R1916-2) at RT for 2 h.