



Order: (888)-282-5810 (Phone)
(818)-707-0392 (Fax)
order@abiocode.com
Web: www.Abiocode.com

PHF16 (N1) Antibody, Rabbit Polyclonal

Cat#: R2097-1

Quantity: 100 ul

Predicted | Observed M.W.: 94 kDa

Lot#: Refer to vial

Application: WB

Uniprot ID: Q92613

Background:

PHD finger protein 16 (PHF16) is also known as Jade family PHD finger protein 3 (JADE3), which is a member of a family of large proteins containing PHD (plant homeo domain)-type zinc fingers. PHF16 is a component of the HBO1 complex which has a histone H4-specific acetyltransferase activity, a reduced activity toward histone H3 and is responsible for the bulk of histone H4 acetylation *in vivo*.

Other Names:

KIAA0215, JADE3, Jade family PHD finger protein 3, PHD finger protein 16, Protein Jade-3

Source and Purity:

Rabbit polyclonal antibodies were produced by immunizing animals with a GST-fusion protein containing the N-terminal region of human PHF16. Antibodies were purified by affinity purification using immunogen.

Storage Buffer and Condition:

Supplied in 1 x PBS (pH 7.4), 100 ug/ml BSA, 40% Glycerol, 0.01% NaN₃. Store at -20 °C. Stable for 6 months from date of receipt.

Species Specificity:

Human, Mouse

Tested Applications:

WB: 1:1,000-1:3,000 (detect endogenous protein*)

*: The apparent protein size on WB may be different from the calculated M.W. due to modifications.

Product Data:

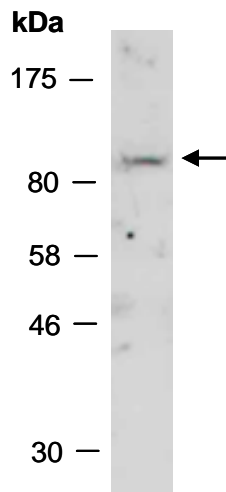


Fig 1. Western blot of total cell extracts from mouse thymus; using anti- PHF16 (N1) (R2097-1) at RT for 2 h.