



Order: (888)-282-5810 (Phone)  
(818)-707-0392 (Fax)  
[order@abiocode.com](mailto:order@abiocode.com)  
Web: [www.Abiocode.com](http://www.Abiocode.com)

---

## EFEMP1 (C) Antibody, Rabbit Polyclonal

**Cat#:** R0925-2

**Quantity:** 100 ul

**Predicted | Observed M.W.:** 36 | 55 kDa

**Lot#:** Refer to vial

**Application:** WB

**Uniprot ID:** Q53TA7

### **Background:**

EFEMP1 is a member of the fibulin family of extracellular matrix glycoproteins. Like all members of this family, EFEMP1 contains tandemly repeated epidermal growth factor-like repeats followed by a C-terminus fibulin-type domain. EFEMP1 is upregulated in malignant gliomas and may play a role in the aggressive nature of these tumors. Mutations in this gene are associated with Doyme honeycomb retinal dystrophy.

### **Other Names:**

Putative uncharacterized protein EFEMP1, DHRD, FBLN3, FBNL, MTLV, S1-5

### **Source and Purity:**

Rabbit polyclonal antibodies were produced by immunizing animals with a GST-fusion protein containing the C-terminal region of human EFEMP1. Antibodies were purified by affinity purification using immunogen.

### **Storage Buffer and Condition:**

Supplied in 1 x PBS (pH 7.4), 100 ug/ml BSA, 40% Glycerol, 0.01% NaN<sub>3</sub>. Store at -20 °C. Stable for 6 months from date of receipt.

### **Species Specificity:**

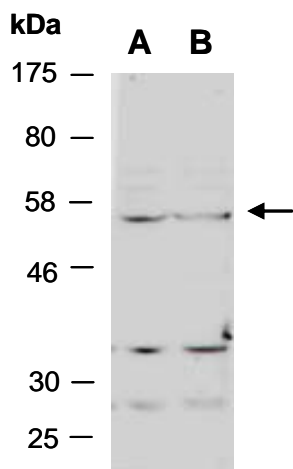
Human

### **Tested Applications:**

WB: 1:1,000-1:3,000 (detect endogenous protein\*)

\*: The apparent protein size on WB may be different from the calculated M.W. due to modifications.

**Product Data:**



**Fig 1.** Western blot of total cell extracts from A) human HeLa, B) human Jurkat; using anti-EFEMP1 (C) (R0925-2) at RT for 2 h.