



Order: (888)-282-5810 (Phone)
(818)-707-0392 (Fax)
order@abiocode.com
Web: www.Abiocode.com

CCND2 (C2) Antibody, Rabbit Polyclonal

Cat#: R1013-2

Quantity: 100 ul

Predicted | Observed M.W.: 33 kDa

Lot#: Refer to vial

Application: WB

Uniprot ID: P30279

Background:

Cyclin-D2 (CCND2) belongs to the highly conserved cyclin family, whose members are characterized by a dramatic periodicity in protein abundance through the cell cycle. Cyclins function as regulators of CDK kinases. Different cyclins exhibit distinct expression and degradation patterns which contribute to the temporal coordination of each mitotic event. CCND2 forms a complex with and functions as a regulatory subunit of CDK4 or CDK6, whose activity is required for cell cycle G1/S transition. CCND2 has been shown to interact with and be involved in the phosphorylation of tumor suppressor protein Rb. Knockout studies suggest the essential roles of CCND2 in ovarian granulosa and germ cell proliferation. High level expression of CCND2 was observed in ovarian and testicular tumors.

Other Names:

G1/S-specific cyclin-D2

Source and Purity:

Rabbit polyclonal antibodies were produced by immunizing animals with a GST-fusion protein containing the C-terminal region of human CCND2. Antibodies were purified by affinity purification using immunogen.

Storage Buffer and Condition:

Supplied in 1 x PBS (pH 7.4), 100 ug/ml BSA, 40% Glycerol, 0.01% NaN₃. Store at -20 °C. Stable for 6 months from date of receipt.

Species Specificity:

Human

Tested Applications:

WB: 1:1,000-1:3,000 (detect endogenous protein*)

*: The apparent protein size on WB may be different from the calculated M.W. due to modifications.

Product Data:

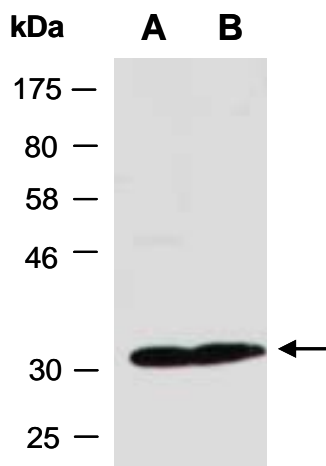


Fig 1. Western blot of total cell extracts from A) human HeLa, B) human Jurkat; using anti-CCND2 (C2) (R1013-2) at RT for 2 h.