



Order: (888)-282-5810 (Phone)
(818)-707-0392 (Fax)
order@abiocode.com
Web: www.Abiocode.com

SIKE1 (C) Antibody, Rabbit Polyclonal

Cat#: R1880-2

Quantity: 100 ul

Predicted | Observed M.W.: 24 | 28 kDa

Lot#: Refer to vial

Application: WB

Uniprot ID: Q9BRV8

Background:

Suppressor of IKBKE 1 (SIKE1) is a physiological suppressor of IKK-epsilon and TBK1 that plays an inhibitory role in virus- and TLR3-triggered IRF3. SIKE1 inhibits TLR3-mediated activation of interferon-stimulated response elements (ISRE) and the IFN-beta promoter. SIKE1 may act by disrupting the interactions of IKBKE or TBK1 with TICAM1/TRIF, IRF3 and DDX58/RIG-I. SIKE1 does not inhibit NF-kappa-B activation pathways.

Other Names:

Suppressor of IKBKE 1, Suppressor of IKK-epsilon, SIKE, FLJ21168

Source and Purity:

Rabbit polyclonal antibodies were produced by immunizing animals with a GST-fusion protein containing the C-terminal region of human SIKE1. Antibodies were purified by affinity purification using immunogen.

Storage Buffer and Condition:

Supplied in 1 x PBS (pH 7.4), 100 ug/ml BSA, 40% Glycerol, 0.01% NaN₃. Store at -20 °C. Stable for 6 months from date of receipt.

Species Specificity:

Human, Mouse

Tested Applications:

WB: 1:1,000-1:3,000 (detect endogenous protein*)

*: The apparent protein size on WB may be different from the calculated M.W. due to modifications.

Product Data:

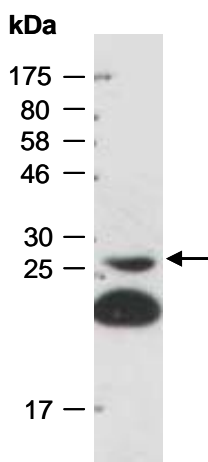


Fig 1. Western blot of total cell extracts from mouse brain; using anti-SIKE1 (C) (R1880-2) at RT for 2 h.