



Order: (888)-282-5810 (Phone)
(818)-707-0392 (Fax)
order@abiocode.com
Web: www.Abiocode.com

COMMD1 (M) Antibody, Rabbit Polyclonal

Cat#: R1911-1

Quantity: 100 ul

Predicted | Observed M.W.: 21 | 25 kDa

Lot#: Refer to vial

Application: WB

Uniprot ID: Q8N668

Background:

COMM domain-containing protein 1 (COMMD1) promotes ubiquitination of NF-kappa-B subunit RELA and its subsequent proteasomal degradation. COMMD1 down-regulates NF-kappa-B activity. COMMD1 also down-regulates SOD1 activity by interfering with its homodimerization. COMMD1 plays a role in copper ion homeostasis and can bind one copper ion per monomer. COMMD1 may function to facilitate biliary copper excretion within hepatocytes

Other Names:

COMM domain-containing protein 1, Protein Murr1, C2orf5, MURR1, MGC27155

Source and Purity:

Rabbit polyclonal antibodies were produced by immunizing animals with a GST-fusion protein containing the middle region of human COMMD1. Antibodies were purified by affinity purification using immunogen.

Storage Buffer and Condition:

Supplied in 1 x PBS (pH 7.4), 100 ug/ml BSA, 40% Glycerol, 0.01% NaN₃. Store at -20 °C. Stable for 6 months from date of receipt.

Species Specificity:

Human, Mouse

Tested Applications:

WB: 1:1,000-1:3,000 (detect endogenous protein*)

*: The apparent protein size on WB may be different from the calculated M.W. due to modifications.

Product Data:

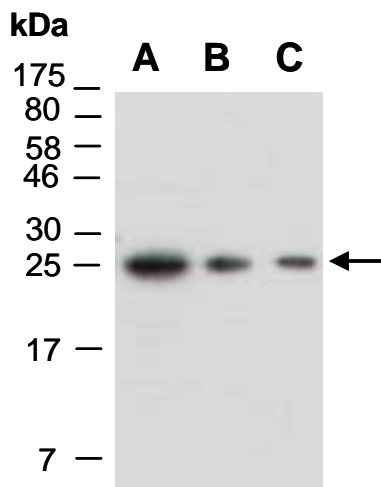


Fig 1. Western blot of total cell extracts from A) mouse thymus, B) human HeLa, C) human Jurkat; using anti-COMMD1 (M) (R1911-1) at RT for 2 h.