



Order: (888)-282-5810 (Phone)
(818)-707-0392 (Fax)
order@abiocode.com
Web: www.Abiocode.com

MAGEB2 (N2) Antibody, Rabbit Polyclonal

Cat#: R2000-2

Quantity: 100 ul

Predicted | Observed M.W.: 35 kDa

Lot#: Refer to vial

Application: WB

Uniprot ID: O15479

Background:

Melanoma-associated antigen B2 (MAGEB2) is a member of the MAGEB gene family. The members of this family have their entire coding sequences located in the last exon, and the encoded proteins show 50 to 68% sequence identity to each other. The promoters and first exons of the MAGEB genes show considerable variability, suggesting that the existence of this gene family enables the same function to be expressed under different transcriptional controls. The MAGEB2 gene is localized in the DSS (dosage-sensitive sex reversal) critical region. It is expressed in testis and placenta, and in a significant fraction of tumors of various histological types.

Other Names:

Melanoma-associated antigen B2, Cancer/testis antigen 3.2, CT3.2, DSS-AHC critical interval MAGE superfamily 6, DAM6, MAGE XP-2 antigen, MAGE-B2 antigen, MGC26438

Source and Purity:

Rabbit polyclonal antibodies were produced by immunizing animals with a GST-fusion protein containing the N-terminal region of human MAGEB2. Antibodies were purified by affinity purification using immunogen.

Storage Buffer and Condition:

Supplied in 1 x PBS (pH 7.4), 100 ug/ml BSA, 40% Glycerol, 0.01% NaN₃. Store at -20 °C. Stable for 6 months from date of receipt.

Species Specificity:

Human

Tested Applications:

WB: 1:1,000-1:3,000 (detect endogenous protein*)

*: The apparent protein size on WB may be different from the calculated M.W. due to modifications.

Product Data:

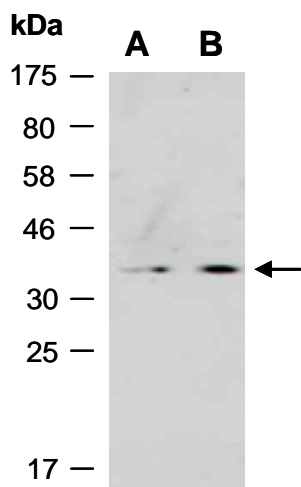


Fig 1. Western blot of total cell extracts from A) human HeLa; B) human Jurkat, using anti-MAGEB2 (N2) (R2000-2) at RT for 2 h.