



Order: (888)-282-5810 (Phone)  
(818)-707-0392 (Fax)  
[order@abiocode.com](mailto:order@abiocode.com)  
Web: [www.Abiocode.com](http://www.Abiocode.com)

---

## **MAGEB1 (N) Antibody, Rabbit Polyclonal**

**Cat#: R2004-1**

**Quantity: 100 ul**

**Predicted | Observed M.W.: 39 kDa**

**Lot#: Refer to vial**

**Application: WB**

**Uniprot ID: P43366**

### **Background:**

Melanoma-associated antigen B1 (MAGEB1) is a member of the MAGEB gene family. The members of this family have their entire coding sequences located in the last exon, and the encoded proteins show 50 to 68% sequence identity to each other. The promoters and first exons of the MAGEB genes show considerable variability, suggesting that the existence of this gene family enables the same function to be expressed under different transcriptional controls. The MAGEB1 gene is localized in the DSS (dosage-sensitive sex reversal) critical region, and expressed in testis and in a significant fraction of tumors of various histological types. The function of MAGEB1 is not well understood.

### **Other Names:**

Melanoma-associated antigen B1, Cancer/testis antigen 3.1, CT3.1, DSS-AHC critical interval MAGE superfamily 10, DAM10MAGE-B1 antigen, MAGE-XP antigen, MAGEL1, MAGEXP, DAM10, MAGE-Xp, MAGEL1, MGC9322

### **Source and Purity:**

Rabbit polyclonal antibodies were produced by immunizing animals with a GST-fusion protein containing N-terminal region of human MAGEB1. Antibodies were purified by affinity purification using immunogen.

### **Storage Buffer and Condition:**

Supplied in 1 x PBS (pH 7.4), 100 ug/ml BSA, 40% Glycerol, 0.01% NaN<sub>3</sub>. Store at -20 °C. Stable for 6 months from date of receipt.

### **Species Specificity:**

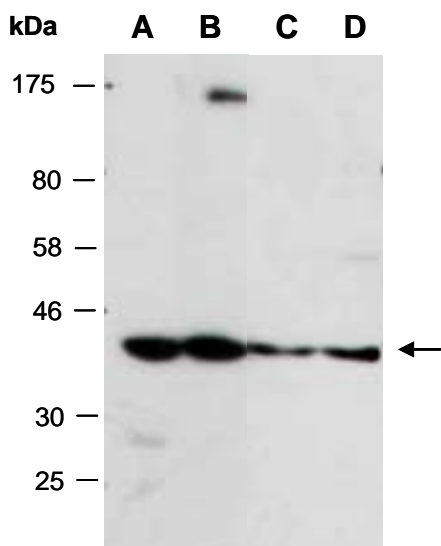
Human, Mouse

### **Tested Applications:**

WB: 1:1,000-1:3,000 (detect endogenous protein\*)

\*: The apparent protein size on WB may be different from the calculated M.W. due to modifications.

**Product Data:**



**Fig 1.** Western blot of total cell extracts from A) mouse brain, B) mouse thymus; C) human HeLa; D) human Jurkat; using anti-MAGEB1 (N) (R2004-1) at RT for 2 h.