



Order: (888)-282-5810 (Phone)
(818)-707-0392 (Fax)
order@abiocode.com
Web: www.Abiocode.com

ENO1 (M) Antibody, Rabbit Polyclonal

Cat#: R2183-2

Quantity: 100 ul

Predicted | Observed M.W.: 47 kDa

Lot#: Refer to vial

Application: WB

Uniprot ID: P06733

Background:

Enolase 1 (ENO1) is also known as alpha-enolase, one of three enolase isoenzymes found in mammals. Each isoenzyme is a homodimer composed of 2 alpha, 2 gamma, or 2 beta subunits, and functions as a glycolytic enzyme. In addition, ENO1 functions as a structural lens protein (tau-crystallin) in the monomeric form. Alternative splicing of the ENO1 gene results in a shorter isoform that has been shown to bind to the c-myc promoter and function as a tumor suppressor. ENO1 has also been identified as an autoantigen in Hashimoto encephalopathy.

Other Names:

Alpha-enolase, 2-phospho-D-glycerate hydro-lyase, C-myc promoter-binding protein, Enolase 1, MBP-1, MPB-1, Non-neural enolase, NNE, Phosphopyruvate hydratase, Plasminogen-binding protein, ENO1L1, PPH

Source and Purity:

Rabbit polyclonal antibodies were produced by immunizing animals with a GST-fusion protein containing the middle region of human ENO1. Antibodies were purified by affinity purification using immunogen.

Storage Buffer and Condition:

Supplied in 1 x PBS (pH 7.4), 100 ug/ml BSA, 40% Glycerol, 0.01% NaN₃. Store at -20 °C. Stable for 6 months from date of receipt.

Species Specificity:

Human, Mouse

Tested Applications:

WB: 1:1,000-1:3,000 (detect endogenous protein*)

*: The apparent protein size on WB may be different from the calculated M.W. due to modifications.

Product Data:

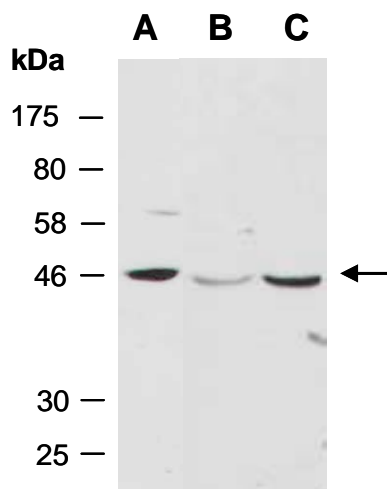


Fig 1. Western blot of total cell extracts from A) mouse brain; B) human HeLa; C) human Jurkat; using anti-ENO1 (M) (R2183-2) at RT for 2 h.