



Order: (888)-282-5810 (Phone)
(818)-707-0392 (Fax)
order@abiocode.com
Web: www.Abiocode.com

MAPK13 (C2) Antibody, Rabbit Polyclonal

Cat#: R2262-2

Quantity: 100 ul

Predicted | Observed M.W.: 42 kDa

Lot#: Refer to vial

Application: WB

Uniprot ID: O15264

Background:

Mitogen-activated protein kinase 13 (MAPK13) is a member of the mitogen-activated protein (MAP) kinase family. MAP kinases act as an integration point for multiple biochemical signals, and are involved in a wide variety of cellular processes such as proliferation, differentiation, transcription regulation and development. MAPK13 is a p38 MAP kinase and is activated by proinflammatory cytokines and cellular stress. Substrates of MAPK13 include the transcription factor ATF2 and the microtubule dynamics regulator stathmin.

Other Names:

PRKM13, SAPK4, Stress-activated protein kinase 4, MAP kinase p38 delta, Mitogen-activated protein kinase p38 delta, MAP kinase 13, Mitogen-activated protein kinase 13, p38delta

Source and Purity:

Rabbit polyclonal antibodies were produced by immunizing animals with a GST-fusion protein containing the C-terminal region of human MAPK13. Antibodies were purified by affinity purification using immunogen.

Storage Buffer and Condition:

Supplied in 1 x PBS (pH 7.4), 100 ug/ml BSA, 40% Glycerol, 0.01% NaN₃. Store at -20 °C. Stable for 6 months from date of receipt.

Species Specificity:

Human, Mouse

Tested Applications:

WB: 1:1,000-1:3,000 (detect endogenous protein*)

*: The apparent protein size on WB may be different from the calculated M.W. due to modifications.

Product Data:

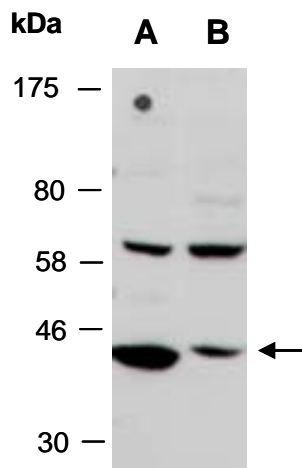


Fig 1. Western blot of total cell extracts from A) mouse thymus; B) human HeLa; using anti-MAPK13 (C2) (R2262-2) at RT for 2 h.