



Order: (888)-282-5810 (Phone)  
(818)-707-0392 (Fax)  
[order@abiocode.com](mailto:order@abiocode.com)  
Web: [www.Abiocode.com](http://www.Abiocode.com)

---

## **TPSAB1 (C2) Antibody, Rabbit Polyclonal**

**Cat#: R2301-3**

**Quantity: 100 ul**

**Predicted | Observed M.W.: 30 kDa**

**Lot#: Refer to vial**

**Application: WB**

**Uniprot ID: Q15661**

### **Background:**

Tryptase alpha/beta-1 (TPSAB1) belongs to the Tryptase family, a family of trypsin-like serine proteases, the peptidase family S1. Tryptases are enzymatically active only as heparin-stabilized tetramers, and they are resistant to all known endogenous proteinase inhibitors. Several tryptase genes are clustered on chromosome 16p13.3. These genes are characterized by several distinct features. They have a highly conserved 3' UTR and contain tandem repeat sequences at the 5' flank and 3' UTR which are thought to play a role in regulation of the mRNA stability. Tryptase is the major neutral protease present in mast cells and is secreted upon the coupled activation-degranulation response of this cell type. Tryptases have been implicated as mediators in the pathogenesis of asthma and other allergic and inflammatory disorders.

### **Other Names:**

Tryptase alpha/beta-1, Tryptase-1, Tryptase I, Tryptase alpha-1, TPS1, TPS2, TPSB1

### **Source and Purity:**

Rabbit polyclonal antibodies were produced by immunizing animals with a GST-fusion protein containing C-terminal region of human TPSAB1. Antibodies were purified by affinity purification using immunogen.

### **Storage Buffer and Condition:**

Supplied in 1 x PBS (pH 7.4), 100 ug/ml BSA, 40% Glycerol, 0.01% NaN<sub>3</sub>. Store at -20 °C. Stable for 6 months from date of receipt.

### **Species Specificity:**

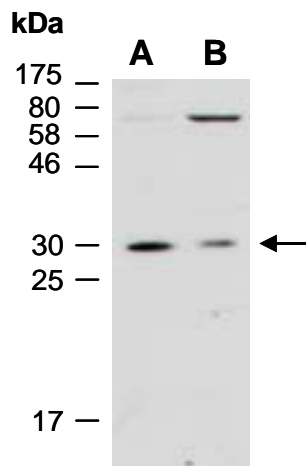
Human

### **Tested Applications:**

WB: 1:1,000-1:3,000 (detect endogenous protein\*)

\*: The apparent protein size on WB may be different from the calculated M.W. due to modifications.

**Product Data:**



**Fig 1.** Western blot of total cell extracts from A) human HeLa; B) human Jurkat; using anti-TPSAB1 (C2) (R2301-3) at RT for 2 h.