



Order: (888)-282-5810 (Phone)
(818)-707-0392 (Fax)
order@abiocode.com
Web: www.Abiocode.com

MMP26 (C1) Antibody, Rabbit Polyclonal

Cat#: R2363-1

Quantity: 100 ul

Predicted | Observed M.W.: 30 kDa

Lot#: Refer to vial

Application: WB

Uniprot ID: Q9NRE1

Background:

Proteins of the matrix metalloproteinase (MMP) family are involved in the breakdown of extracellular matrix in normal physiological processes, such as embryonic development, reproduction, and tissue remodeling, as well as in disease processes, such as arthritis and metastasis. Most MMP's are secreted as inactive proproteins, which are activated when cleaved by extracellular proteinases. Matrix metalloproteinase-26 (MMP26) degrades type IV collagen, fibronectin, fibrinogen, casein, vitronectin, alpha 1-antitrypsin, alpha 2-macroglobulin, and insulin-like growth factor-binding protein 1, and activates MMP9 by cleavage. MMP26 differs from most MMP family members in that it lacks a conserved C-terminal protein domain.

Other Names:

Matrix metalloproteinase-26, MMP-26, Endometase, MGC126590, MGC126592

Source and Purity:

Rabbit polyclonal antibodies were produced by immunizing animals with a GST-fusion protein containing the C-terminal region of human MMP26. Antibodies were purified by affinity purification using immunogen.

Storage Buffer and Condition:

Supplied in 1 x PBS (pH 7.4), 100 ug/ml BSA, 40% Glycerol, 0.01% NaN₃. Store at -20 °C. Stable for 6 months from date of receipt.

Species Specificity:

Human, Mouse

Tested Applications:

WB: 1:1,000-1:3,000 (detect endogenous protein*)

*: The apparent protein size on WB may be different from the calculated M.W. due to modifications.

Product Data:

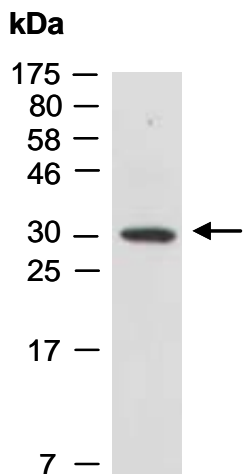


Fig 1. Western blot of total cell extracts from mouse brain; using anti-MMP26 (N) (R2363-1) at RT for 2 h.