



Order: (888)-282-5810 (Phone)  
(818)-707-0392 (Fax)  
[order@abiocode.com](mailto:order@abiocode.com)  
Web: [www.Abiocode.com](http://www.Abiocode.com)

---

## **ISL1 (C) Antibody, Rabbit Polyclonal**

**Cat#: R1460-2**

**Quantity: 100 ul**

**Predicted | Observed M.W.: 39 kDa**

**Lot#: Refer to vial**

**Application: WB**

**Uniprot ID: P61371**

### **Background:**

Insulin gene enhancer protein ISL-1 is a member of the LIM/homeodomain family of transcription factors. ISL1 binds to the enhancer region of the insulin gene, among others, and may play an important role in regulating insulin gene expression. ISL1 is central to the development of pancreatic cell lineages and may also be required for motor neuron generation. Mutations in this gene have been associated with maturity-onset diabetes of the young.

### **Other Names:**

Insulin gene enhancer protein ISL-1, Islet-1, Isl-1

### **Source and Purity:**

Rabbit polyclonal antibodies were produced by immunizing animals with a GST-fusion protein containing the C-terminal region of human ISL1. Antibodies were purified by affinity purification using immunogen.

### **Storage Buffer and Condition:**

Supplied in 1 x PBS (pH 7.4), 100 ug/ml BSA, 40% Glycerol, 0.01% NaN<sub>3</sub>. Store at -20 °C. Stable for 6 months from date of receipt.

### **Species Specificity:**

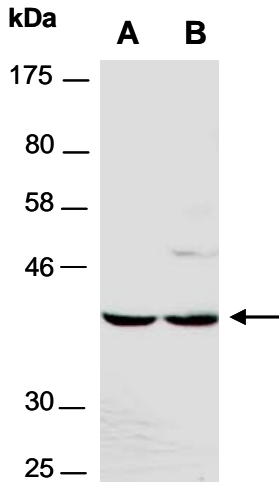
Human, Mouse

### **Tested Applications:**

WB: 1:1,000-1:3,000 (detect endogenous protein\*)

\*: The apparent protein size on WB may be different from the calculated M.W. due to modifications.

**Product Data:**



**Fig 1.** Western blot of total cell extracts from A) mouse brain, B) mouse thymus; using anti-ISL1 (C) (R1460-2) at RT for 2 h.