



Order: (888)-282-5810 (Phone)
(818)-707-0392 (Fax)
order@abiocode.com
Web: www.Abiocode.com

ASAP1 (N) Antibody, Rabbit Polyclonal

Cat#: R1952-1

Quantity: 100 ul

Predicted | Observed M.W.: 125 | 160 kDa

Lot#: Refer to vial

Application: WB

Uniprot ID: Q9ULH1

Background:

ASAP1 is an ADP-ribosylation factor (ARF) GTPase-activating protein. The GTPase-activating activity is stimulated by phosphatidylinositol 4,5-bisphosphate (PIP2), and is greater towards ARF1 and ARF5, and lesser for ARF6. ASAP1 may be involved in the regulation of membrane trafficking and cytoskeleton remodeling.

Other Names:

CENTB4, DDEF1, KIAA1249, PAP, ZG14P, Arf-GAP with SH3 domain, ANK repeat and PH domain-containing protein 1, 130 kDa phosphatidylinositol 4,5-bisphosphate-dependent ARF1 GTPase-activating protein, ADP-ribosylation factor-directed GTPase-activating protein 1, ARF GTPase-activating protein 1, Development and differentiation-enhancing factor 1, DEF-1, Differentiation-enhancing factor 1, PIP2-dependent ARF1 GAP

Source and Purity:

Rabbit polyclonal antibodies were produced by immunizing animals with a GST-fusion protein containing the N-terminal region of human ASAP1. Antibodies were purified by affinity purification using immunogen.

Storage Buffer and Condition:

Supplied in 1 x PBS (pH 7.4), 100 ug/ml BSA, 40% Glycerol, 0.01% NaN₃. Store at -20 °C. Stable for 6 months from date of receipt.

Species Specificity:

Human, Mouse

Tested Applications:

WB: 1:1,000-1:3,000 (detect endogenous protein*)

*: The apparent protein size on WB may be different from the calculated M.W. due to modifications.

Product Data:

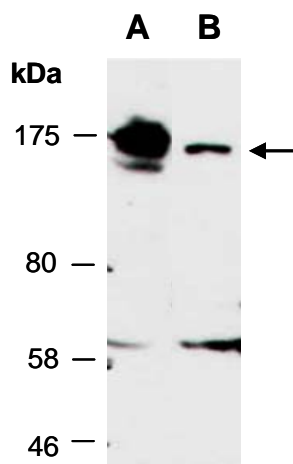


Fig 1. Western blot of total cell extracts from A) mouse brain, B) human HeLa,; using anti-ASAP1 (N) (R1952-1) at RT for 2 h.