



Order: (888)-282-5810 (Phone)
(818)-707-0392 (Fax)
order@abiocode.com
Web: www.Abiocode.com

SEC13 (C) Antibody, Rabbit Polyclonal

Cat#: R3177-2

Lot#: Refer to vial

Quantity: 100 ul

Application: WB

Predicted | Observed M.W.: 36 kDa

Uniprot ID: P55735

Background:

Protein SEC13 homolog (SEC13) belongs to the SEC13 family of WD-repeat proteins. It is a constituent of the endoplasmic reticulum and the nuclear pore complex. It has similarity to the yeast SEC13 protein, which is required for vesicle biogenesis from endoplasmic reticulum during the transport of proteins. Multiple alternatively spliced transcript variants of SEC13 have been found.

Other Names:

D3S1231E, npp-20, SEC13L1, SEC13R, SEC13-like protein 1, SEC13-related protein, Protein SEC13 homolog

Source and Purity:

Rabbit polyclonal antibodies were produced by immunizing animals with a GST-fusion protein containing the C-terminal region of human SEC13. Antibodies were purified by affinity purification using immunogen.

Storage Buffer and Condition:

Supplied in 1 x PBS (pH 7.4), 100 ug/ml BSA, 40% Glycerol, 0.01% NaN₃. Store at -20 °C. Stable for 6 months from date of receipt.

Species Specificity:

Human, Mouse

Tested Applications:

WB: 1:1,000-1:3,000 (detect endogenous protein*)

*: The apparent protein size on WB may be different from the calculated M.W. due to modifications.

Product Data:

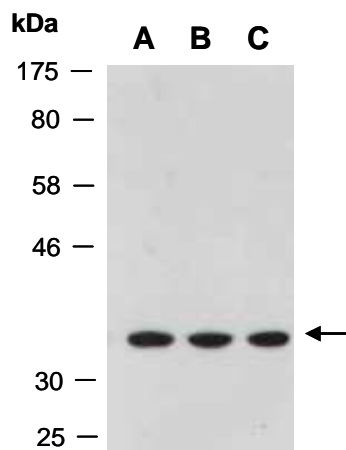


Fig 1. Western blot of total cell extracts from A) mouse thymus; B) human HeLa; C) human Jurkat; using anti-SEC13 (C) (R3177-2) at RT for 2 h.