



Order: (888)-282-5810 (Phone)
(818)-707-0392 (Fax)
order@abiocode.com
Web: www.Abiocode.com

BCORL1 (N) Antibody, Rabbit Polyclonal

Cat#: R2679-1

Quantity: 100 ul

Predicted | Observed M.W.: 183 | 280 kDa

Lot#: Refer to vial

Application: WB

Uniprot ID: Q5H9F3

Background:

BCL-6 corepressor-like protein 1 (BCORL1) is a transcriptional corepressor that is found tethered to promoter regions by DNA-binding proteins. BCORL1 can interact with several different class II histone deacetylases to repress transcription. Two transcript variants encoding different isoforms have been found for this gene.

Other Names:

CXorf10, FLJ11362, BCL-6 corepressor-like protein 1, BCoR-L1, BCoR-like protein 1

Source and Purity:

Rabbit polyclonal antibodies were produced by immunizing animals with a GST-fusion protein containing the N-terminal region of human BCORL1. Antibodies were purified by affinity purification using immunogen.

Storage Buffer and Condition:

Supplied in 1 x PBS (pH 7.4), 100 ug/ml BSA, 40% Glycerol, 0.01% NaN₃. Store at -20 °C. Stable for 6 months from date of receipt.

Species Specificity:

Human

Tested Applications:

WB: 1:1,000-1:3,000 (detect endogenous protein*)

*: The apparent protein size on WB may be different from the calculated M.W. due to modifications.

Product Data:

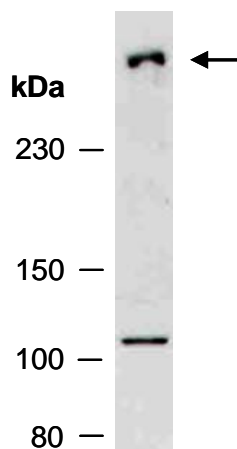


Fig 1. Western blot of total cell extracts from human HeLa; using anti-BCORL1 (N) (R2679-1) at RT for 2 h.