



Order: (888)-282-5810 (Phone)
(818)-707-0392 (Fax)
order@abiocode.com
Web: www.Abiocode.com

SPECC1 (N) Antibody, Rabbit Polyclonal

Cat#: R2924-1

Quantity: 100 ul

Predicted | Observed M.W.: 119 kDa

Lot#: Refer to vial

Application: WB

Uniprot ID: Q5M775

Background:

Sperm antigen with calponin homology and coiled-coil domains 1 (SPECC1) belongs to the cytospin-A family. It is localized in the nucleus, and highly expressed in testis and some cancer cell lines. A chromosomal translocation involving the SPECC1 gene and platelet-derived growth factor receptor, beta gene (PDGFRB) may be a cause of juvenile myelomonocytic leukemia.

Other Names:

CYTSB, FLJ36955, HCMOGT-1, NSP, Cytospin-B, Nuclear structure protein 5, Sperm antigen HCMOGT-1, NSP5, Sperm antigen HCMOGT-1, Sperm antigen with calponin homology and coiled-coil domains 1

Source and Purity:

Rabbit polyclonal antibodies were produced by immunizing animals with a GST-fusion protein containing the N-terminal region of human SPECC1. Antibodies were purified by affinity purification using immunogen.

Storage Buffer and Condition:

Supplied in 1 x PBS (pH 7.4), 100 ug/ml BSA, 40% Glycerol, 0.01% NaN₃. Store at -20 °C. Stable for 6 months from date of receipt.

Species Specificity:

Human

Tested Applications:

WB: 1:1,000-1:3,000 (detect endogenous protein*)

*: The apparent protein size on WB may be different from the calculated M.W. due to modifications.

Product Data:

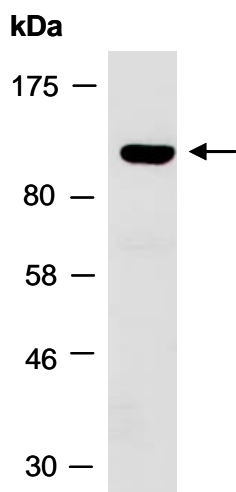


Fig 1. Western blot of total cell extracts from human HeLa; using anti-SPECC1 (N) (R2924-1) at RT for 2 h.