



Order: (888)-282-5810 (Phone)
(818)-707-0392 (Fax)
order@abiocode.com
Web: www.Abiocode.com

MBD3 (C) Antibody, Rabbit Polyclonal

Cat#: R1605-2

Quantity: 100 ul

Predicted | Observed M.W.: 33 kDa

Lot#: Refer to vial

Application: WB

Uniprot ID: O95983

Background:

DNA methylation is the major modification of eukaryotic genomes and plays an essential role in mammalian development. Methyl-CpG-binding domain protein 3 (MBD3) belongs to a family of nuclear proteins characterized by the presence of a methyl-CpG binding domain (MBD). MBD3 is a subunit of the NuRD, a multisubunit complex containing nucleosome remodeling and histone deacetylase activities. Unlike the other family members, MBD3 is not capable of binding to methylated DNA. MBD3 mediates the association of metastasis-associated protein 2 (MAP2) with the core histone deacetylase complex.

Other Names:

Methyl-CpG-binding domain protein 3, Methyl-CpG-binding domain protein 3

Source and Purity:

Rabbit polyclonal antibodies were produced by immunizing animals with a GST-fusion protein containing the C-terminal region of human MBD3. Antibodies were purified by affinity purification using immunogen.

Storage Buffer and Condition:

Supplied in 1 x PBS (pH 7.4), 100 ug/ml BSA, 40% Glycerol, 0.01% NaN₃. Store at -20 °C. Stable for 6 months from date of receipt.

Species Specificity:

Human, Mouse

Tested Applications:

WB: 1:500-1:2,000 (detect endogenous protein*)

*: The apparent protein size on WB may be different from the calculated M.W. due to modifications.

Product Data:

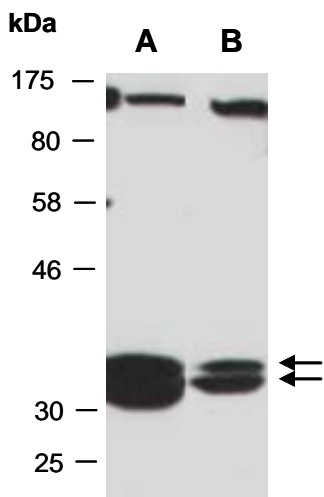


Fig 1. Western blot of total cell extracts from A) mouse thymus; B) human Jurkat; using anti-MBD3 (C) (R1605-2) at RT for 2 h.