



Order: (888)-282-5810 (Phone)  
(818)-707-0392 (Fax)  
[order@abiocode.com](mailto:order@abiocode.com)  
Web: [www.Abiocode.com](http://www.Abiocode.com)

---

## NEFH (N1) Antibody, Rabbit Polyclonal

**Cat#:** R2261-2

**Quantity:** 100 ul

**Predicted | Observed M.W.:** 112 | 200 kDa

**Lot#:** Refer to vial

**Application:** WB

**Uniprot ID:** P12036

### Background:

Neurofilaments are type IV intermediate filament heteropolymers composed of light, medium, and heavy chains. Neurofilaments comprise the axoskeleton and functionally maintain neuronal caliber. They may also play a role in intracellular transport to axons and dendrites. Neurofilament heavy polypeptide (NEFH) is the heavy neurofilament protein. This protein is commonly used as a biomarker of neuronal damage and susceptibility to amyotrophic lateral sclerosis (ALS) has been associated with mutations in the NEFH gene.

### Other Names:

Neurofilament heavy polypeptide, NF-H, 200 kDa neurofilament protein, Neurofilament triplet H protein

### Source and Purity:

Rabbit polyclonal antibodies were produced by immunizing animals with a GST-fusion protein containing the N-terminal region of human NEFH. Antibodies were purified by affinity purification using immunogen.

### Storage Buffer and Condition:

Supplied in 1 x PBS (pH 7.4), 100 ug/ml BSA, 40% Glycerol, 0.01% NaN<sub>3</sub>. Store at -20 °C. Stable for 6 months from date of receipt.

### Species Specificity:

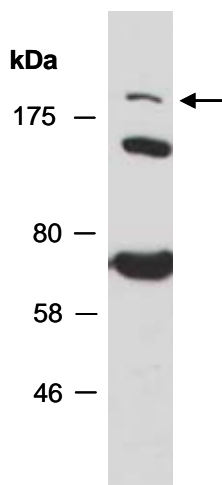
Human

### Tested Applications:

WB: 1:500-1:2,000 (detect endogenous protein\*)

\*: The apparent protein size on WB may be different from the calculated M.W. due to modifications.

**Product Data:**



**Fig 1.** Western blot of total cell extracts from human HeLa; using anti-NEFH (N1) (R2261-2) at RT for 2 h.