



Order: (888)-282-5810 (Phone)  
(818)-707-0392 (Fax)  
[order@abiocode.com](mailto:order@abiocode.com)  
Web: [www.Abiocode.com](http://www.Abiocode.com)

---

## **GLI2 (C) Antibody, Rabbit Polyclonal**

**Cat#: R2670-2**

**Quantity: 100 ul**

**Predicted | Observed M.W.: 168 | 200 kDa**

**Lot#: Refer to vial**

**Application: WB**

**Uniprot ID: P10070**

### **Background:**

Zinc finger protein GLI2 belongs to the C2H2-type zinc finger protein subclass of the Gli family. Members of this subclass are characterized as transcription factors which bind DNA through zinc finger motifs. Gli family of zinc finger proteins are mediators of Sonic hedgehog (Shh) signaling and they are implicated as potent oncogenes in the embryonal carcinoma cell. GLI2 localizes to the cytoplasm and activates the patched Drosophila homolog (PTCH) gene expression. GLI2 is also thought to play a role during embryogenesis. GLI2 is associated with several phenotypes- Greig cephalopolysyndactyly syndrome, Pallister-Hall syndrome, preaxial polydactyly type IV, postaxial polydactyly types A1 and B.

### **Other Names:**

HPE9, THP1, THP2, Tax helper protein, Zinc finger protein GLI2, THP

### **Source and Purity:**

Rabbit polyclonal antibodies were produced by immunizing animals with a GST-fusion protein containing the C-terminal region of human GLI2. Antibodies were purified by affinity purification using immunogen.

### **Storage Buffer and Condition:**

Supplied in 1 x PBS (pH 7.4), 100 ug/ml BSA, 40% Glycerol, 0.01% NaN<sub>3</sub>. Store at -20 °C. Stable for 6 months from date of receipt.

### **Species Specificity:**

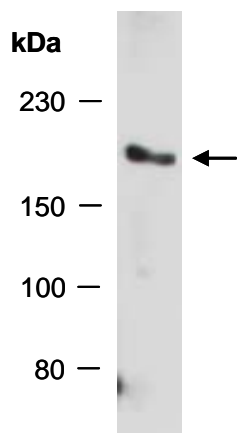
Human

### **Tested Applications:**

WB: 1:500-1:2,000 (detect endogenous protein\*)

\*: The apparent protein size on WB may be different from the calculated M.W. due to modifications.

**Product Data:**



**Fig 1.** Western blot of total cell extracts from human Jurkat, using anti-GLI2 (C) (R2670-2) at RT for 2 h.