



Order: (888)-282-5810 (Phone)
(818)-707-0392 (Fax)
order@abiocode.com
Web: www.Abiocode.com

LUX (vPair™) Antibodies

Cat#: R1247-vp

Lot#: Refer to vial

Predicted | Observed M.W.: 35 kDa

Uniprot ID: Q9SNB4

Application: WB

Quantity: 50 ul LUX (N1) (R1247-1a) Rabbit Polyclonal Antibody
50 ul LUX (N2) (R1247-4) Rabbit Polyclonal Antibody

Product Introduction:

vPair™ antibodies represent a pair of fully characterized antibodies that recognize two different regions of a target protein. The product is developed by Abiocode to address whether the signal observed truly represents the protein of interest, an often encountered issue in antibody-based assays. The use of a pair of fully characterized vPair™ antibodies in the same assay can validate signal specificity since vPair™ antibodies recognize two independent epitopes of the same protein. Different sets of vPair™ antibodies are developed at Abiocode to work with specific applications, including antibody arrays, Western blot, IP-Western, ChIP, IHC, and FACS.

Background:

Transcription factor LUX is a transcription factor essential for the generation of the circadian clock oscillation. LUX is necessary for activation of CCA1 and LHY expression. LUX is co-regulated with TOC1 and seems to be repressed by CCA1 and LHY by direct binding of these proteins to the evening element in the LUX promoter. LUX also directly regulates the expression of PRR9, a major component of the morning transcriptional feedback circuit, by binding to the specific sites on PRR9 promoter. LUX binds to its own promoter, inducing a negative auto-regulatory feedback loop within the core clock. LUX also binds to ELF3 and associates with ELF4 in a diurnal complex, which is required for the expression of the growth-promoting transcription factors PIF4 and PIF5 and subsequent hypocotyl growth in the early evening.

Other Names:

Transcription factor LUX, Protein LUX ARRHYTHMO, Protein PHYTOCLOCK 1, PCL1

Source and Purity:

Rabbit polyclonal antibodies were produced by immunizing animals with GST-fusion proteins containing 2 distinct N-terminal regions of *arabidopsis thaliana* LUX (At3g46640). Antibodies were purified by affinity purification using immunogen.

Storage Buffer and Condition:

Supplied in 1 x PBS (pH 7.4), 100 ug/ml BSA, 40% Glycerol, 0.01% NaN₃. Store at -20 °C. Stable for 6 months from date of receipt.

Species Specificity:

Arabidopsis thaliana

Tested Applications:

WB: 1:1,000-1:3,000 (detect endogenous protein*)

*: The apparent protein size on WB may be different from the calculated M.W. due to modifications.

Product Data:

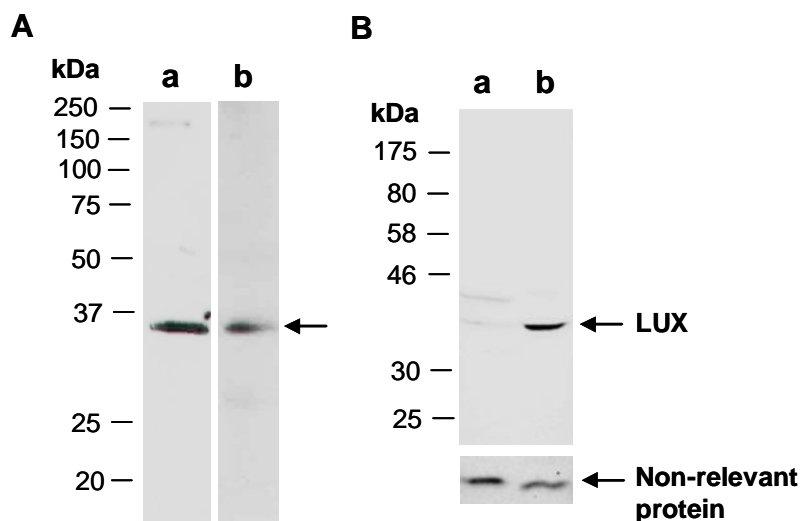


Fig 1. (A) Western blot of total cell extracts from evening-grown *arabidopsis thaliana*; using a. anti-LUX (N1) (R1247-1a) and b. anti-LUX (N2) (R1247-4) at RT for 2 h. **(B)** Western blot of total cell extracts from a. light-grown and b. evening-grown *arabidopsis thaliana*, using anti-LUX (N1) (R1247-1a) (top) or a non-relevant Ab for loading control (bottom).