



Order: (888)-282-5810 (Phone)
(818)-707-0392 (Fax)
order@abiocode.com
Web: www.Abiocode.com

ETR1 (N) Antibody, Rabbit Polyclonal

Cat#: R3467-1

Quantity: 100 ul

Predicted I Observed M.W.: 83 I 77 kDa

Lot#: Refer to vial

Application: WB

Uniprot ID: P49333

Background:

Similar to prokaryote sensory transduction proteins, Ethylene receptor 1 (ETR1) binds ethylene and contains a histidine kinase and a response regulator domain. ETR1 also has histidine kinase activity and is regulated by RTE1. Mutations in ETR1 affect ethylene binding and metabolism of other plant hormones such as auxin, cytokinins, ABA and gibberellic acid. Mutations in ETR1 also block ethylene stimulation of flavonol synthesis.

Other Names:

ETR, AtETR1, ETHYLENE RESPONSE 1, At1g66340, T27F4.9, EIN1, ETHYLENE INSENSITIVE 1

Source and Purity:

Rabbit polyclonal antibodies were produced by immunizing animals with a GST-fusion protein containing the N-terminal region of *arabidopsis thaliana* ETR1/EIN1 (AT1G66340). Antibodies were purified by affinity purification using immunogen.

Storage Buffer and Condition:

Supplied in 1 x PBS (pH 7.4), 100 ug/ml BSA, 40% Glycerol, 0.01% NaN₃. Store at -20 °C. Stable for 6 months from date of receipt.

Species Specificity:

Arabidopsis thaliana

Tested Applications:

WB: 1:500-1:2,000 (detect endogenous protein*)

*: The apparent protein size on WB may be different from the calculated M.W. due to modifications.



Order: (888)-282-5810 (Phone)
(818)-707-0392 (Fax)
order@abiocode.com
Web: www.Abiocode.com

Product Data:

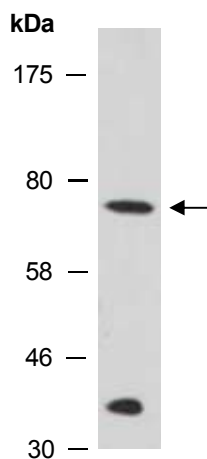


Fig 1. Western blot analysis of total protein extracts from wild type arabidopsis leaves, using anti-ETR1 (N) (R3467-1) at RT for 2 h. The observed M.W. for ETR1 is approximately 77 kD (Qu X. et al., 2007, BMC Plant Biol. 7:3).