



Order: (888)-282-5810 (Phone)  
(818)-707-0392 (Fax)  
[order@abiocode.com](mailto:order@abiocode.com)  
Web: [www.Abiocode.com](http://www.Abiocode.com)

---

## ARR1 (C2) Antibody, Rabbit Polyclonal

**Cat#:** R3468-2

**Quantity:** 100 ul

**Predicted | Observed M.W.:** 75 kDa

**Lot#:** Refer to vial

**Application:** WB

**Uniprot ID:** Q940D0

### **Background:**

ARR1 encodes an Arabidopsis response regulator (ARR) protein that acts in concert with other type-B ARRs in the cytokinin signaling pathway. ARR1 is also involved in cytokinin-dependent inhibition of hypocotyl elongation and cytokinin-dependent greening and shooting in tissue culture.

### **Other Names:**

Two-component response regulator ARR1, RESPONSE REGULATOR 1, RR1, At3g16857, K20I9.9, MUH15.1

### **Source and Purity:**

Rabbit polyclonal antibodies were produced by immunizing animals with a GST-fusion protein containing the C-terminal region of *arabidopsis thaliana* ARR1 (AT3G16857). Antibodies were purified by affinity purification using immunogen.

### **Storage Buffer and Condition:**

Supplied in 1 x PBS (pH 7.4), 100 ug/ml BSA, 40% Glycerol, 0.01% NaN<sub>3</sub>. Store at -20 °C. Stable for 6 months from date of receipt.

### **Species Specificity:**

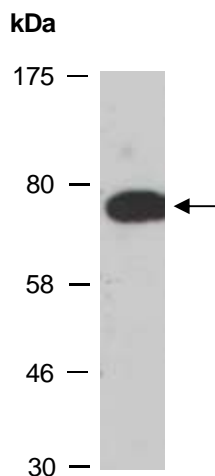
Arabidopsis thaliana

### **Tested Applications:**

WB: 1:500-1:2,000 (detect endogenous protein\*)

\*: The apparent protein size on WB may be different from the calculated M.W. due to modifications.

**Product Data:**



**Fig 1.** Western blot analysis of total protein extracts from wild type arabidopsis leaves, using anti-ARR1 (C2) (R3468-2) at RT for 2 h.