



Order: (888)-282-5810 (Phone)
(818)-707-0392 (Fax)
order@abiocode.com
Web: www.Abiocode.com

CHD1 (C) Antibody, Rabbit Polyclonal

Cat#: R0423-3

Quantity: 100 ul

Predicted | Observed M.W.: 197 | 230 kDa

Lot#: Refer to vial

Application: WB

Uniprot ID: O14646

Background:

Chromodomain-helicase-DNA-binding protein 1 (CHD1) belongs to the SNF2/RAD54 helicase family. CHD1 is an ATP-dependent chromatin-remodeling factor which functions as substrate recognition component of the transcription regulatory histone acetylation (HAT) complex SAGA. CHD1 regulates polymerase II transcription and is also required for efficient transcription by RNA polymerase I, and more specifically the polymerase I transcription termination step.

Other Names:

Chromodomain-helicase-DNA-binding protein 1, ATP-dependent helicase CHD1, CHD-1

Source and Purity:

Rabbit polyclonal antibodies were produced by immunizing animals with a GST-fusion protein containing the C-terminal region of human CHD1. Antibodies were purified by affinity purification using immunogen.

Storage Buffer and Condition:

Supplied in 1 x PBS (pH 7.4), 100 ug/ml BSA, 40% Glycerol, 0.01% NaN₃. Store at -20 °C. Stable for 6 months from date of receipt.

Species Specificity:

Human

Tested Applications:

WB: 1:1,000-1:3,000 (detect endogenous protein*)

*: The apparent protein size on WB may be different from the calculated M.W. due to modifications.

Product Data:

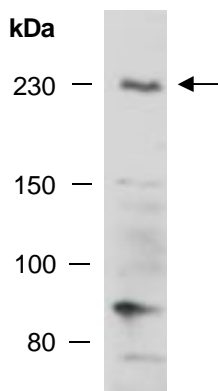


Fig 1. Western blot of total cell extracts from human HeLa, using anti-CHD1 (C) (R0423-3) at RT for 2 h.