



Order: (888)-282-5810 (Phone)
(818)-707-0392 (Fax)
order@abiocode.com
Web: www.Abiocode.com

CUL9 (C) Antibody, Rabbit Polyclonal

Cat#: R1008-3

Quantity: 100 ul

Predicted | Observed M.W.: 281 kDa

Lot#: Refer to vial

Application: WB

Uniprot ID: Q8IWT3

Background:

Cullin-9 (CUL9) belongs to the cullin family. CUL9 is a cytoplasmic anchor protein in p53-associated protein complex. CUL9 regulates the subcellular localization of p53 and subsequent function. CUL9 seems to be part of an atypical cullin-RING-based E3 ubiquitin-protein ligase complex. In vitro, complexes of CUL9/PARC with either CUL7 or TP53 contain E3 ubiquitin-protein ligase activity.

Other Names:

Cullin-9, Ubch7-associated protein 1, p53-associated parkin-like cytoplasmic protein, H7AP1, KIAA0708, PARC. CUL-9

Source and Purity:

Rabbit polyclonal antibodies were produced by immunizing animals with a GST-fusion protein containing the C-terminal region of human CUL9. Antibodies were purified by affinity purification using immunogen.

Storage Buffer and Condition:

Supplied in 1 x PBS (pH 7.4), 100 ug/ml BSA, 40% Glycerol, 0.01% NaN₃. Store at -20 °C. Stable for 6 months from date of receipt.

Species Specificity:

Human, Mouse

Tested Applications:

WB: 1:1,000-1:3,000 (detect endogenous protein*)

*: The apparent protein size on WB may be different from the calculated M.W. due to modifications.

Product Data:

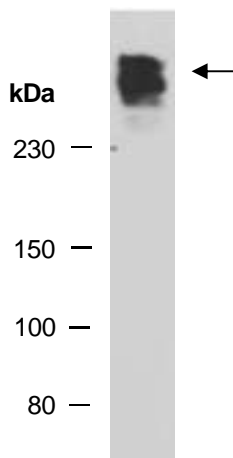


Fig 1. Western blot of total cell extracts from mouse brain, using anti-CUL9 (C) (R1008-3) at RT for 2 h.