



Order: (888)-282-5810 (Phone)
(818)-707-0392 (Fax)
order@abiocode.com
Web: www.Abiocode.com

GSX2 (C) Antibody, Rabbit Polyclonal

Cat#: R1442-2

Quantity: 100 ul

Predicted | Observed M.W.: 32 | 40 kDa

Lot#: Refer to vial

Application: WB

Uniprot ID: Q9BZM3

Background:

GS homeobox 2 (GSX2) belongs to the Antp homeobox family and is a probable transcription factor that binds to the DNA sequence 5'-CNAATTAG-3'.

Other Names:

GS homeobox 2, Homeobox protein GSH-2, GSH2

Source and Purity:

Rabbit polyclonal antibodies were produced by immunizing animals with a GST-fusion protein containing the C-terminal region of human GSX2. Antibodies were purified by affinity purification using immunogen.

Storage Buffer and Condition:

Supplied in 1 x PBS (pH 7.4), 100 ug/ml BSA, 40% Glycerol, 0.01% NaN₃. Store at -20 °C. Stable for 6 months from date of receipt.

Species Specificity:

Human

Tested Applications:

WB: 1:1,000-1:3,000 (detect endogenous protein*)

*: The apparent protein size on WB may be different from the calculated M.W. due to modifications.

Product Data:

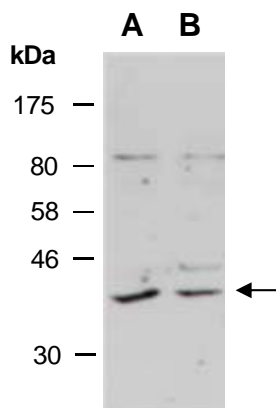


Fig 1. Western blot of total cell extracts from A) human HeLa; B) human Jurkat; using anti-GSX2 (C) (R1442-2) at RT for 2 h.