



Order: (888)-282-5810 (Phone)  
(818)-707-0392 (Fax)  
[order@abiocode.com](mailto:order@abiocode.com)  
Web: [www.Abiocode.com](http://www.Abiocode.com)

---

## **ILK (N) Antibody, Rabbit Polyclonal**

**Cat#: R1572-1**

**Quantity: 100 ul**

**Predicted | Observed M.W.: 51 kDa**

**Lot#: Refer to vial**

**Application: WB**

**Uniprot ID: Q13418**

### **Background:**

Integrin-linked protein kinase (ILK) is a peripheral membrane protein belonging to the protein kinase superfamily and the TKL Ser/Thr protein kinase family. ILK is a receptor-proximal protein kinase regulating integrin-mediated signal transduction. ILK may act as a mediator of inside-out integrin signaling.

### **Other Names:**

Integrin-linked protein kinase, 59 kDa serine/threonine-protein kinase, ILK-1, ILK-2, p59ILK, ILK1, ILK2

### **Source and Purity:**

Rabbit polyclonal antibodies were produced by immunizing animals with a GST-fusion protein containing the N-terminal region of human ILK. Antibodies were purified by affinity purification using immunogen.

### **Storage Buffer and Condition:**

Supplied in 1 x PBS (pH 7.4), 100 ug/ml BSA, 40% Glycerol, 0.01% NaN<sub>3</sub>. Store at -20 °C. Stable for 6 months from date of receipt.

### **Species Specificity:**

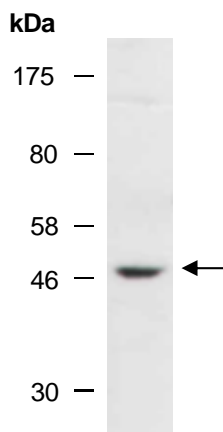
Human, Mouse

### **Tested Applications:**

WB: 1:1,000-1:3,000 (detect endogenous protein\*)

\*: The apparent protein size on WB may be different from the calculated M.W. due to modifications.

**Product Data:**



**Fig 1.** Western blot of total cell extracts from mouse thymus, using anti-ILK (N) (R1572-1) at RT for 2 h.