



Order: (888)-282-5810 (Phone)  
(818)-707-0392 (Fax)  
[order@abiocode.com](mailto:order@abiocode.com)  
Web: [www.Abiocode.com](http://www.Abiocode.com)

---

## STX4 (C) Antibody, Rabbit Polyclonal

**Cat#:** R1675-2

**Quantity:** 100 ul

**Predicted | Observed M.W.:** 34 kDa

**Lot#:** Refer to vial

**Application:** WB

**Uniprot ID:** Q12846

### **Background:**

Syntaxin-4 (STX4) is a Single-pass type IV membrane protein belonging to the syntaxin family. STX4 is a plasma membrane t-SNARE that mediates docking of transport vesicles. STX4 is necessary for the translocation of SLC2A4 from intracellular vesicles to the plasma membrane. Additionally, STX4 may also play a role in docking of synaptic vesicles at presynaptic active zones.

### **Other Names:**

Syntaxin-4, STX4A, Renal carcinoma antigen NY-REN-31

### **Source and Purity:**

Rabbit polyclonal antibodies were produced by immunizing animals with a GST-fusion protein containing the C-terminal region of human STX4. Antibodies were purified by affinity purification using immunogen.

### **Storage Buffer and Condition:**

Supplied in 1 x PBS (pH 7.4), 100 ug/ml BSA, 40% Glycerol, 0.01% NaN<sub>3</sub>. Store at -20 °C. Stable for 6 months from date of receipt.

### **Species Specificity:**

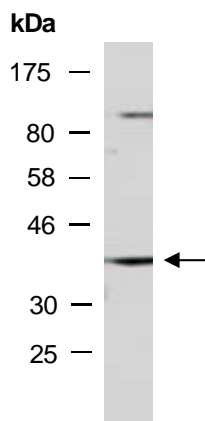
Human

### **Tested Applications:**

WB: 1:1,000-1:3,000 (detect endogenous protein\*)

\*: The apparent protein size on WB may be different from the calculated M.W. due to modifications.

**Product Data:**



**Fig 1.** Western blot of total cell extracts from human Jurkat; using anti-STX4 (C) (R1675-2) at RT for 2 h.