



Order: (888)-282-5810 (Phone)
(818)-707-0392 (Fax)
order@abiocode.com
Web: www.Abiocode.com

PTOV1 (N) Antibody, Rabbit Polyclonal

Cat#: R2242-1

Quantity: 100 ul

Predicted | Observed M.W.: 47 kDa

Lot#: Refer to vial

Application: WB

Uniprot ID: Q86YD1

Background:

Prostate tumor-overexpressed gene 1 protein (PTOV1) belongs to the Mediator complex subunit 25 family as well as the PTOV1 subfamily and may activate transcription. PTOV1 is required for nuclear translocation of FLOT1. PTOV1 promotes cell proliferation as well.

Other Names:

Prostate tumor-overexpressed gene 1 protein, Activator interaction domain-containing protein 2, ACID2, PTOV-1

Source and Purity:

Rabbit polyclonal antibodies were produced by immunizing animals with a GST-fusion protein containing the N-terminal region of human PTOV1. Antibodies were purified by affinity purification using immunogen.

Storage Buffer and Condition:

Supplied in 1 x PBS (pH 7.4), 100 ug/ml BSA, 40% Glycerol, 0.01% NaN₃. Store at -20 °C. Stable for 6 months from date of receipt.

Species Specificity:

Human, Mouse

Tested Applications:

WB: 1:1,000-1:3,000 (detect endogenous protein*)

*: The apparent protein size on WB may be different from the calculated M.W. due to modifications.

Product Data:

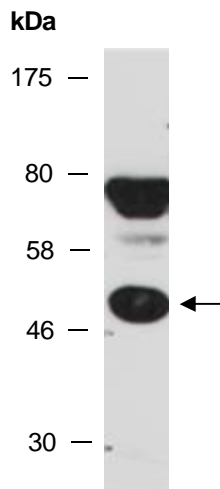


Fig 1. Western blot of total cell extracts from mouse brain, using anti-PTOV1 (N) (R2242-1) at RT for 2 h.