



Order: (888)-282-5810 (Phone)
(818)-707-0392 (Fax)
order@abiocode.com
Web: www.Abiocode.com

EPHA2 (M) Antibody, Rabbit Polyclonal

Cat#: R2294-2

Quantity: 100 ul

Predicted | Observed M.W.: 108 kDa

Lot#: Refer to vial

Application: WB

Uniprot ID: P29317

Background:

Ephrin type-A receptor 2 (EPHA2) is a Single-pass type I membrane protein belonging to the protein kinase superfamily, the Tyr protein kinase family, and the Ephrin receptor subfamily. EPHA2 is a receptor tyrosine kinase which binds promiscuously membrane-bound ephrin-A family ligands residing on adjacent cells, leading to contact-dependent bidirectional signaling into neighboring cells. The signaling pathway downstream of the receptor is referred to as forward signaling while the signaling pathway downstream of the ephrin ligand is referred to as reverse signaling.

Other Names:

Ephrin type-A receptor 2, ECK, Epithelial cell kinase, Tyrosine-protein kinase receptor ECK

Source and Purity:

Rabbit polyclonal antibodies were produced by immunizing animals with a GST-fusion protein containing the middle region of human EPHA2. Antibodies were purified by affinity purification using immunogen.

Storage Buffer and Condition:

Supplied in 1 x PBS (pH 7.4), 100 ug/ml BSA, 40% Glycerol, 0.01% NaN₃. Store at -20 °C. Stable for 6 months from date of receipt.

Species Specificity:

Human, Mouse

Tested Applications:

WB: 1:1,000-1:3,000 (detect endogenous protein*)

*: The apparent protein size on WB may be different from the calculated M.W. due to modifications.

Product Data:

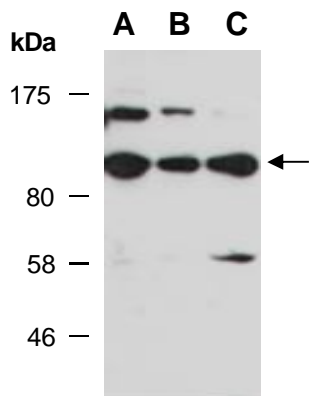


Fig 1. Western blot of total cell extracts from A) mouse thymus; B) human HeLa; C) human Jurkat; using anti-EPHA2 (M) (R2294-2) at RT for 2 h.