



Order: (888)-282-5810 (Phone)
(818)-707-0392 (Fax)
order@abiocode.com
Web: www.Abiocode.com

PRKCB (C) Antibody, Rabbit Polyclonal

Cat#: R2331-2

Quantity: 100 ul

Predicted | Observed M.W.: 77 kDa

Lot#: Refer to vial

Application: WB

Uniprot ID: P05771

Background:

Protein kinase C beta type (PRKCB) is a peripheral membrane protein belonging to the protein kinase superfamily, the AGC Ser/Thr protein kinase family, and the PKC subfamily. PRKCB is a calcium-activated, phospholipid- and diacylglycerol (DAG)-dependent serine/threonine-protein kinase involved in various cellular processes such as regulation of the B-cell receptor (BCR) signalosome, oxidative stress-induced apoptosis, androgen receptor-dependent transcription regulation, insulin signaling and endothelial cells proliferation.

Other Names:

Protein kinase C beta type, PKCB, PRKCB1, PKC-B, PKC-beta

Source and Purity:

Rabbit polyclonal antibodies were produced by immunizing animals with a GST-fusion protein containing the C-terminal region of human PRKCB. Antibodies were purified by affinity purification using immunogen.

Storage Buffer and Condition:

Supplied in 1 x PBS (pH 7.4), 100 ug/ml BSA, 40% Glycerol, 0.01% NaN₃. Store at -20 °C. Stable for 6 months from date of receipt.

Species Specificity:

Human, Mouse

Tested Applications:

WB: 1:1,000-1:3,000 (detect endogenous protein*)

*: The apparent protein size on WB may be different from the calculated M.W. due to modifications.

Product Data:

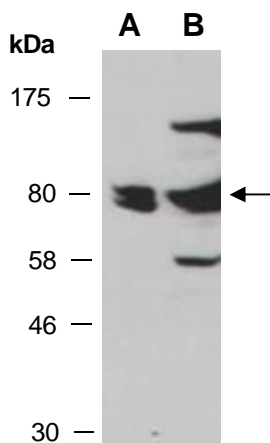


Fig 1. Western blot of total cell extracts from A) mouse thymus, B) human HeLa; using anti-PRKCB (C) (R2331-2) at RT for 2 h.