



Order: (888)-282-5810 (Phone)
(818)-707-0392 (Fax)
order@abiocode.com
Web: www.Abiocode.com

GLIS2 (C) Antibody, Rabbit Polyclonal

Cat#: R2960-2

Quantity: 100 ul

Predicted | Observed M.W.: 56 | 60 kDa

Lot#: Refer to vial

Application: WB

Uniprot ID: Q9BZE0

Background:

Zinc finger protein GLIS2 belongs to the GLI C2H2-type zinc-finger protein family and can act either as a transcriptional repressor or as a transcriptional activator, depending on the cell context. GLIS2 acts as a repressor of the Hedgehog signaling pathway. GLIS2 is also necessary to maintain the differentiated epithelial phenotype in renal cells through the inhibition of SNAI1, which itself induces the epithelial-to-mesenchymal transition.

Other Names:

Zinc finger protein GLIS2, GLI-similar 2, Neuronal Krueppel-like protein, NKL

Source and Purity:

Rabbit polyclonal antibodies were produced by immunizing animals with a GST-fusion protein containing the C-terminal region of human GLIS2. Antibodies were purified by affinity purification using immunogen.

Storage Buffer and Condition:

Supplied in 1 x PBS (pH 7.4), 100 ug/ml BSA, 40% Glycerol, 0.01% NaN₃. Store at -20 °C. Stable for 6 months from date of receipt.

Species Specificity:

Human

Tested Applications:

WB: 1:1,000-1:3,000 (detect endogenous protein*)

*: The apparent protein size on WB may be different from the calculated M.W. due to modifications.

Product Data:

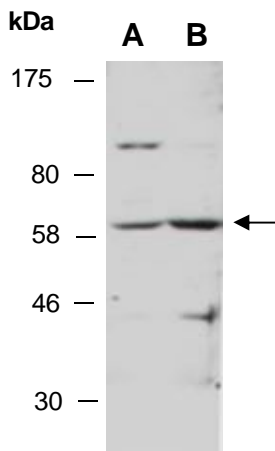


Fig 1. Western blot of total cell extracts from A) human HeLa; B) human Jurkat; using anti-GLIS2 (C) (R2960-2) at RT for 2 h.