



Order: (888)-282-5810 (Phone)
(818)-707-0392 (Fax)
order@abiocode.com
Web: www.Abiocode.com

CSNK1G3 (C1) Antibody, Rabbit Polyclonal

Cat#: R1700-1

Quantity: 100 ul

Predicted | Observed M.W.: 51 | 60 kDa

Lot#: Refer to vial

Application: WB

Uniprot ID: Q9Y6M4

Background:

Casein kinase I isoform gamma-3 (CSNK1G3) is a serine/threonine-protein kinase belonging to the protein kinase superfamily, the CK1 Ser/Thr protein kinase family, and the Casein kinase I subfamily. Casein kinases are operationally defined by their preferential utilization of acidic proteins such as caseins as substrates. CSNK1G3 can phosphorylate a large number of proteins and also participates in Wnt signaling. CSNK1G3 also regulates fast synaptic transmission mediated by glutamate.

Other Names:

Casein kinase I isoform gamma-3, CKI-gamma 3

Source and Purity:

Rabbit polyclonal antibodies were produced by immunizing animals with a GST-fusion protein containing the C-terminal region of human CSNK1G3. Antibodies were purified by affinity purification using immunogen.

Storage Buffer and Condition:

Supplied in 1 x PBS (pH 7.4), 100 ug/ml BSA, 40% Glycerol, 0.01% NaN₃. Store at -20 °C. Stable for 6 months from date of receipt.

Species Specificity:

Human

Tested Applications:

WB: 1:1,000-1:3,000 (detect endogenous protein*)

*: The apparent protein size on WB may be different from the calculated M.W. due to modifications.

Product Data:

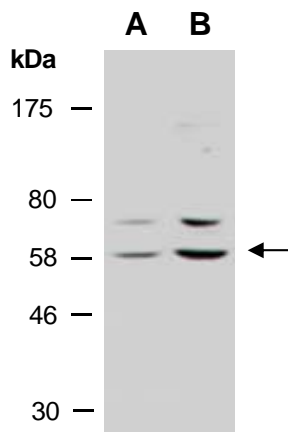


Fig 1. Western blot of total cell extracts from A) human HeLa; B) human Jurkat; using anti-CSNK1G3 (C1) (R1700-1) at RT for 2 h.