



Order: (888)-282-5810 (Phone)
(818)-707-0392 (Fax)
order@abiocode.com
Web: www.Abiocode.com

CTTN (N) Antibody, Rabbit Polyclonal

Cat#: R1767-1

Quantity: 100 ul

Predicted | Observed M.W.: 62 | 78 kDa

Lot#: Refer to vial

Application: WB

Uniprot ID: Q14247

Background:

Src substrate cortactin (CTTN) contributes to the organization of the actin cytoskeleton and cell structure. In complex with ABL1 and MYLK, CTTN regulates cortical actin-based cytoskeletal rearrangement critical to sphingosine 1-phosphate (S1P)-mediated endothelial cell (EC) barrier enhancement. Additionally, CTTN plays a role in the regulation of cell migration as well as a role in the invasiveness of cancer cells, and the formation of metastases.

Other Names:

Src substrate cortactin, EMS1, Amplixin, Oncogene EMS1

Source and Purity:

Rabbit polyclonal antibodies were produced by immunizing animals with a GST-fusion protein containing the N-terminal region of human CTTN. Antibodies were purified by affinity purification using immunogen.

Storage Buffer and Condition:

Supplied in 1 x PBS (pH 7.4), 100 ug/ml BSA, 40% Glycerol, 0.01% NaN₃. Store at -20 °C. Stable for 6 months from date of receipt.

Species Specificity:

Human

Tested Applications:

WB: 1:1,000-1:3,000 (detect endogenous protein*)

*: The apparent protein size on WB may be different from the calculated M.W. due to modifications.

Product Data:

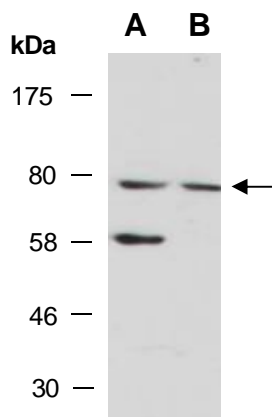


Fig 1. Western blot of total cell extracts from A) human HeLa; B) human Jurkat; using anti-CTTN (N) (R1767-1) at RT for 2 h.