



Order: (888)-282-5810 (Phone)  
(818)-707-0392 (Fax)  
[order@abiocode.com](mailto:order@abiocode.com)  
Web: [www.Abiocode.com](http://www.Abiocode.com)

---

## LHX6 (C1) Antibody, Rabbit Polyclonal

**Cat#:** R1972-2

**Quantity:** 100 ul

**Predicted | Observed M.W.:** 40 kDa

**Lot#:** Refer to vial

**Application:** WB

**Uniprot ID:** Q9UPM6

### **Background:**

LIM/homeobox protein Lhx6 (LHX6) is a probable transcription factor required for the expression of a subset of genes involved in interneurons migration and development. LHX6 functions in the specification of cortical interneuron subtypes and in the migration of GABAergic interneuron precursors from the subpallium to the cerebral cortex.

### **Other Names:**

LIM/homeobox protein Lhx6, LIM/homeobox protein Lhx6.1, LIM homeobox protein 6, LHX6.1

### **Source and Purity:**

Rabbit polyclonal antibodies were produced by immunizing animals with a GST-fusion protein containing the C-terminal region of human LHX6. Antibodies were purified by affinity purification using immunogen.

### **Storage Buffer and Condition:**

Supplied in 1 x PBS (pH 7.4), 100 ug/ml BSA, 40% Glycerol, 0.01% NaN<sub>3</sub>. Store at -20 °C. Stable for 6 months from date of receipt.

### **Species Specificity:**

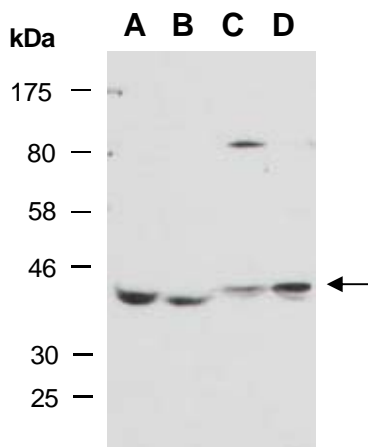
Human, Mouse

### **Tested Applications:**

WB: 1:1,000-1:3,000 (detect endogenous protein\*)

\*: The apparent protein size on WB may be different from the calculated M.W. due to modifications.

**Product Data:**



**Fig 1.** Western blot of total cell extracts from A) mouse brain; B) mouse thymus; C) human HeLa; D) human Jurkat; using anti-LHX6 (C1) (R1972-2) at RT for 2 h.