



Order: (888)-282-5810 (Phone)
(818)-707-0392 (Fax)
order@abiocode.com
Web: www.Abiocode.com

SHB (C) Antibody, Rabbit Polyclonal

Cat#: R1941-2

Quantity: 100 ul

Predicted | Observed M.W.: 55 | 60 kDa

Lot#: Refer to vial

Application: WB

Uniprot ID: Q15464

Background:

SH2 domain-containing adapter protein B (SHB) belongs to the Peripheral membrane protein and is an adapter protein which regulates several signal transduction cascades by linking activated receptors to downstream signaling components. SHB may play a role in angiogenesis by regulating FGFR1, VEGFR2 and PDGFR signaling.

Other Names:

SH2 domain-containing adapter protein B

Source and Purity:

Rabbit polyclonal antibodies were produced by immunizing animals with a GST-fusion protein containing the C-terminal region of human SHB. Antibodies were purified by affinity purification using immunogen.

Storage Buffer and Condition:

Supplied in 1 x PBS (pH 7.4), 100 ug/ml BSA, 40% Glycerol, 0.01% NaN₃. Store at -20 °C. Stable for 6 months from date of receipt.

Species Specificity:

Human

Tested Applications:

WB: 1:1,000-1:3,000 (detect endogenous protein*)

*: The apparent protein size on WB may be different from the calculated M.W. due to modifications.

Product Data:

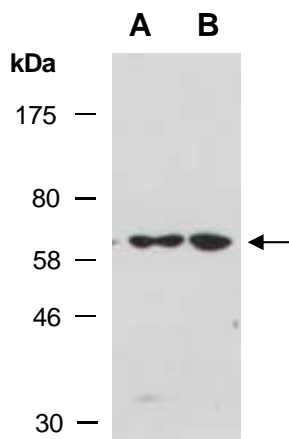


Fig 1. Western blot of total cell extracts from A) human HeLa; B) human Jurkat; using anti-SHB (C) (R1941-2) at RT for 2 h.