



Order: (888)-282-5810 (Phone)
(818)-707-0392 (Fax)
order@abiocode.com
Web: www.Abiocode.com

SETD2 (C) Antibody, Rabbit Polyclonal

Cat#: R0435-3

Quantity: 100 ul

Predicted | Observed M.W.: 288 kDa

Lot#: Refer to vial

Application: WB

Uniprot ID: Q9BYW2

Background:

Histone-lysine N-methyltransferase SETD2 belongs to the histone-lysine methyltransferase family. SETD2 methylates 'Lys-36' of histone H3, which represents a specific tag for epigenetic transcriptional activation. SETD2 probably plays a role in chromatin structure modulation during elongation via its interaction with hyperphosphorylated POLR2A. SETD2 binds to DNA at promoters, and may act as a transcription activator. Additionally, SETD2 binds to the promoters of adenovirus 12 E1A gene in the case of infection, possibly leading to regulating its expression.

Other Names:

Histone-lysine N-methyltransferase SETD2, HIF-1, Huntingtin yeast partner B, Huntingtin-interacting protein 1, Short name=HIP-1, Huntingtin-interacting protein B, Lysine N-methyltransferase 3A, SET domain-containing protein 2, hSET2, p231HBP, HIF1, HYPB, KIAA1732, KMT3A, SET2

Source and Purity:

Rabbit polyclonal antibodies were produced by immunizing animals with a GST-fusion protein containing the C-terminal region of mouse SETD2. Antibodies were purified by affinity purification using immunogen.

Storage Buffer and Condition:

Supplied in 1 x PBS (pH 7.4), 100 ug/ml BSA, 40% Glycerol, 0.01% NaN₃. Store at -20 °C. Stable for 6 months from date of receipt.

Species Specificity:

Human, Mouse

Tested Applications:

WB: 1:1,000-1:3,000 (detect endogenous protein*)

*: The apparent protein size on WB may be different from the calculated M.W. due to modifications.

Product Data:

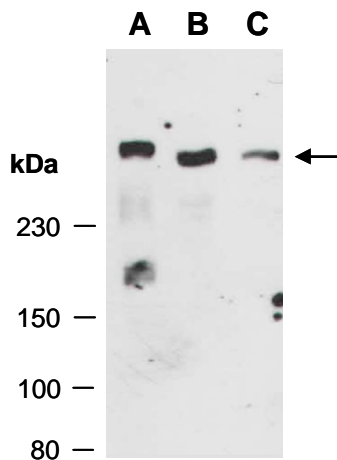


Fig 1. Western blot of total cell extracts from A) mouse thymus, B) human HeLa, C) human Jurkat; using anti-SETD2 (C) (R0435-3) at RT for 2 h.