



Order: (888)-282-5810 (Phone)
(818)-707-0392 (Fax)
order@abiocode.com
Web: www.Abiocode.com

AKT2 (C) Antibody, Rabbit Polyclonal

Cat#: R1183-2

Quantity: 100 ul

Predicted | Observed M.W.: 56 kDa

Lot#: Refer to vial

Application: WB

Uniprot ID: P31751

Background:

AKT2 is one of 3 closely related serine/threonine-protein kinases (AKT1, AKT2 and AKT3) called the AKT kinase, which regulate many processes including metabolism, proliferation, cell survival, growth and angiogenesis. Defects in AKT2 are a cause of susceptibility to breast cancer. AKT2 promotes metastasis of tumor cells without affecting the latency of tumor development. Mutations in AKT2 are related to non-insulin-dependent diabetes mellitus and hypoinsulinemic hypoglycemia with hemihypertrophy.

Other Names:

RAC-beta serine/threonine-protein kinase, Protein kinase Akt-2, Protein kinase B beta, PKB beta, RAC-PK-beta

Source and Purity:

Rabbit polyclonal antibodies were produced by immunizing animals with a GST-fusion protein containing the C-terminal region of human AKT2. Antibodies were purified by affinity purification using immunogen.

Storage Buffer and Condition:

Supplied in 1 x PBS (pH 7.4), 100 ug/ml BSA, 40% Glycerol, 0.01% NaN₃. Store at -20 °C. Stable for 6 months from date of receipt.

Species Specificity:

Human

Tested Applications:

WB: 1:1,000-1:3,000 (detect endogenous protein*)

*: The apparent protein size on WB may be different from the calculated M.W. due to modifications.

Product Data:

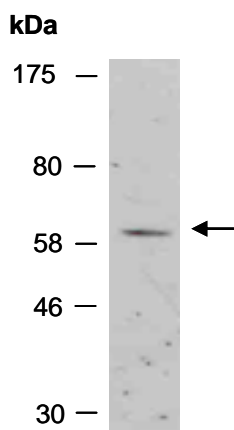


Fig 1. Western blot of total cell extracts from human HeLa, using anti-AKT2 (C) (R1183-2) at RT for 2 h.