



Order: (888)-282-5810 (Phone)
(818)-707-0392 (Fax)
order@abiocode.com
Web: www.Abiocode.com

RAB27A (C) Antibody, Rabbit Polyclonal

Cat#: R2277-3

Quantity: 100 ul

Predicted | Observed M.W.: 25 | 30 kDa

Lot#: Refer to vial

Application: WB

Uniprot ID: Q9ERI2

Background:

Ras-related protein Rab-27A (RAB27A) belongs to the small GTPase superfamily, Rab family. RAB27A is membrane-bound and may be involved in protein transport and small GTPase mediated signal transduction. RAB27A plays a role in cytotoxic granule exocytosis in lymphocytes, and it is required for both granule maturation and granule docking and priming at the immunologic synapse. Mutations in the RAB27A gene are associated with Griscelli syndrome type 2.

Other Names:

Ras-related protein Rab-27A, Rab28a

Source and Purity:

Rabbit polyclonal antibodies were produced by immunizing animals with a GST-fusion protein containing the C-terminal region of mouse RAB27A. Antibodies were purified by affinity purification using immunogen.

Storage Buffer and Condition:

Supplied in 1 x PBS (pH 7.4), 100 ug/ml BSA, 40% Glycerol, 0.01% NaN₃. Store at -20 °C. Stable for 6 months from date of receipt.

Species Specificity:

Human, Mouse

Tested Applications:

WB: 1:1,000-1:3,000 (detect endogenous protein*)

*: The apparent protein size on WB may be different from the calculated M.W. due to modifications.

Product Data:

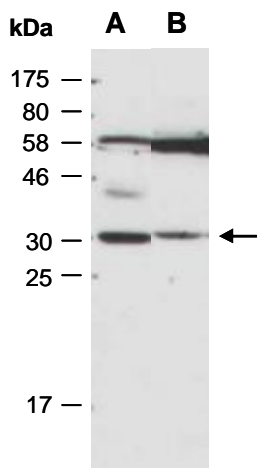


Fig 1. Western blot of total cell extracts from A) mouse brain; B) human HeLa; using anti-RAB27A (C) (R2277-3) at RT for 2 h.