



Order: (888)-282-5810 (Phone)
(818)-707-0392 (Fax)
order@abiocode.com
Web: www.Abiocode.com

GCN1L1 (C) Antibody, Rabbit Polyclonal

Cat#: R2322-2

Quantity: 100 ul

Predicted | Observed M.W.: 293 | 250 kDa

Lot#: Refer to vial

Application: WB

Uniprot ID: Q92616

Background:

GCN1L1 acts as a translation activator that mediates translational control and performs an EF3-related function on the ribosome by regulating GCN2 protein kinase (EIF2AK1-4) activity.

Other Names:

Translational activator GCN1, HsGCN1, GCN1-like protein 1, KIAA0219, GCN1, GCN1L

Source and Purity:

Rabbit polyclonal antibodies were produced by immunizing animals with a GST-fusion protein containing the C-terminal region of human GCN1L1. Antibodies were purified by affinity purification using immunogen.

Storage Buffer and Condition:

Supplied in 1 x PBS (pH 7.4), 100 ug/ml BSA, 40% Glycerol, 0.01% NaN₃. Store at -20 °C. Stable for 6 months from date of receipt.

Species Specificity:

Human

Tested Applications:

WB: 1:1,000-1:3,000 (detect endogenous protein*)

*: The apparent protein size on WB may be different from the calculated M.W. due to modifications.

Product Data:

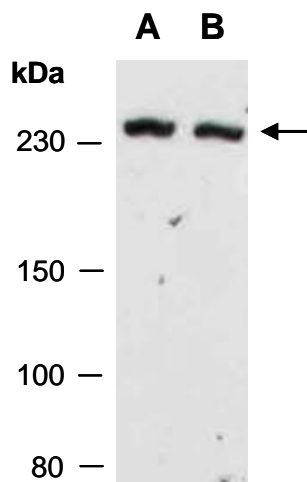


Fig 1. Western blot of total cell extracts from A) human HeLa, B) human Jurkat; using anti-GCN1L1 (C) (R2322-2) at RT for 2 h.