



Order: (888)-282-5810 (Phone)
(818)-707-0392 (Fax)
order@abiocode.com
Web: www.Abiocode.com

NIN (N) Antibody, Rabbit Polyclonal

Cat#: R2411-1

Quantity: 100 ul

Predicted | Observed M.W.: 243 | 220 kDa

Lot#: Refer to vial

Application: WB

Uniprot ID: Q8N4C6

Background:

Ninein (NIN) is one of the proteins important for centrosomal function. NIN is important for positioning and anchoring the microtubules minus-ends in epithelial cells. Localization of NIN to the centrosome requires three leucine zippers in the central coiled-coil domain. Multiple alternatively spliced transcript variants that encode different isoforms of NIN have been reported.

Other Names:

Ninein, hNinein, Glycogen synthase kinase 3 beta-interacting protein, GSK3B-interacting protein, KIAA1565

Source and Purity:

Rabbit polyclonal antibodies were produced by immunizing animals with a GST-fusion protein containing the N-terminal region of human NIN. Antibodies were purified by affinity purification using immunogen.

Storage Buffer and Condition:

Supplied in 1 x PBS (pH 7.4), 100 ug/ml BSA, 40% Glycerol, 0.01% NaN₃. Store at -20 °C. Stable for 6 months from date of receipt.

Species Specificity:

Human, Mouse

Tested Applications:

WB: 1:1,000-1:3,000 (detect endogenous protein*)

*: The apparent protein size on WB may be different from the calculated M.W. due to modifications.

Product Data:

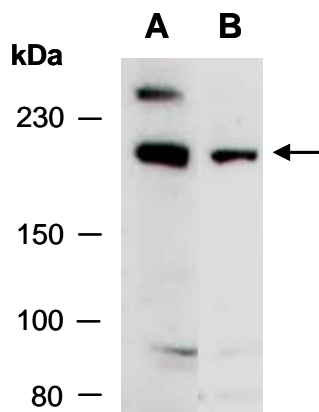


Fig 1. Western blot of total cell extracts from A) mouse thymus, B) human Jurkat; using anti-NIN (N) (R2411-1) at RT for 2 h.