



Order: (888)-282-5810 (Phone)
(818)-707-0392 (Fax)
order@abiocode.com
Web: www.Abiocode.com

NOTCH1 (N) Antibody, Rabbit Polyclonal

Cat#: R2812-1

Quantity: 100 ul

Predicted | Observed M.W.: 273 kDa

Lot#: Refer to vial

Application: WB

Uniprot ID: P46531

Background:

Neurogenic locus notch homolog protein 1 (NOTCH1) is a member of the Notch family. Members of this type 1 transmembrane protein family share structural characteristics including an extracellular domain consisting of multiple epidermal growth factor-like (EGF) repeats, and an intracellular domain consisting of multiple, different domain types. Notch family members play a role in a variety of developmental processes by controlling cell fate decisions. The Notch signaling network is an evolutionarily conserved intercellular signaling pathway which regulates interactions between physically adjacent cells. In *Drosophila*, notch interaction with its cell-bound ligands (delta, serrate) establishes an intercellular signaling pathway that plays a key role in development. Homologues of the notch-ligands have also been identified in human, but precise interactions between these ligands and the human notch homologues remain to be determined. NOTCH1 is cleaved in the trans-Golgi network, and presented on the cell surface as a heterodimer. NOTCH1 functions as a receptor for membrane bound ligands, and may play multiple roles during development.

Other Names:

Neurogenic locus notch homolog protein 1, Notch 1, hN1, Translocation-associated notch protein TAN-1, TAN1

Source and Purity:

Rabbit polyclonal antibodies were produced by immunizing animals with a GST-fusion protein containing the N-terminal region of human NOTCH1. Antibodies were purified by affinity purification using immunogen.

Storage Buffer and Condition:

Supplied in 1 x PBS (pH 7.4), 100 ug/ml BSA, 40% Glycerol, 0.01% NaN₃. Store at -20 °C. Stable for 6 months from date of receipt.

Tested Applications:

WB: 1:1,000-1:3,000 (detect endogenous protein*)

*: The apparent protein size on WB may be different from the calculated M.W. due to modifications.

Species Specificity:

Human, Mouse

Product Data:

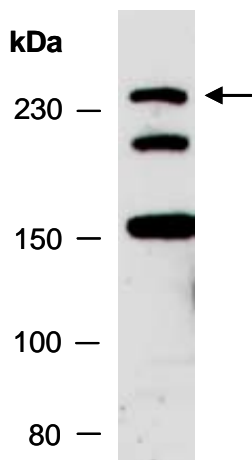


Fig 1. Western blot of total cell extracts from mouse thymus; using anti-NOTCH1 (N) (R-2812-1) at RT for 2 h.