



Order: (888)-282-5810 (Phone)
(818)-707-0392 (Fax)
order@abiocode.com
Web: www.Abiocode.com

WT1 (C) Antibody, Rabbit Polyclonal

Cat#: R2955-2

Quantity: 100 ul

Predicted | Observed M.W.: 49 | 46 kDa

Lot#: Refer to vial

Application: WB

Uniprot ID: P19544

Background:

Wilms tumor protein 1 (WT1) is a transcription factor that contains four zinc-finger motifs at the C-terminus and a proline/glutamine-rich DNA-binding domain at the N-terminus. WT1 has an essential role in the normal development of the urogenital system, and it is mutated in a small subset of patients with Wilm's tumors. WT1 exhibits complex tissue-specific and polymorphic imprinting pattern, with biallelic, and monoallelic expression from the maternal and paternal alleles in different tissues. Multiple transcript variants have been described. In several variants, there is evidence for the use of a non-AUG (CUG) translation initiation site upstream of and in-frame with the first AUG. It has also been shown that WT1 mRNA undergoes RNA editing in human and rat, and that this process is tissue-restricted and developmentally regulated.

Other Names:

Wilms tumor protein, WT33, AWT1, GUD, WAGR, WIT-2

Source and Purity:

Rabbit polyclonal antibodies were produced by immunizing animals with a GST-fusion protein containing the C-terminal region of human WT1. Antibodies were purified by affinity purification using immunogen.

Storage Buffer and Condition:

Supplied in 1 x PBS (pH 7.4), 100 ug/ml BSA, 40% Glycerol, 0.01% NaN₃. Store at -20 °C. Stable for 6 months from date of receipt.

Species Specificity:

Human

Tested Applications:

WB: 1:1,000-1:3,000 (detect endogenous protein*)

*: The apparent protein size on WB may be different from the calculated M.W. due to modifications.

Product Data:

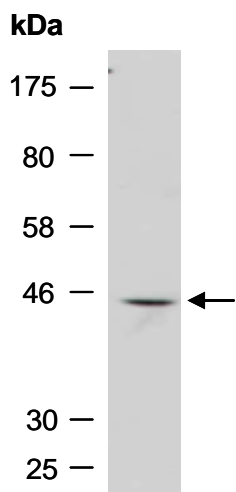


Fig 1. Western blot of total cell extracts from human Jurkat, using anti-WT1 (C) (R2955-2) at RT for 2 h.